

25 June 09 Topic

## Applying Model-Based Systems Engineering with CORE – a Practical Example

[www.incose.org/alamo](http://www.incose.org/alamo)

### Thurs, 15 May Agenda

- 5:30 Networking Social
- 5:50 Chapter Meeting
- 6:00 Guest Speaker

*If attending, please RSVP to  
Phil Simpkins at  
[psimpkins@vitechcorp.com](mailto:psimpkins@vitechcorp.com)*

Phil Simpkins from Vitech will talk about A real-world application of Model Based Systems Engineering (MBSE). This was developed for a tool vendor challenge. INCOSE's tool vendor challenge provided the opportunity to demonstrate the benefits of MBSE through a simply defined problem statement.

### Questions? Contact:

Scot French

[french\\_scot@bah.com](mailto:french_scot@bah.com)

Phil Simpkins

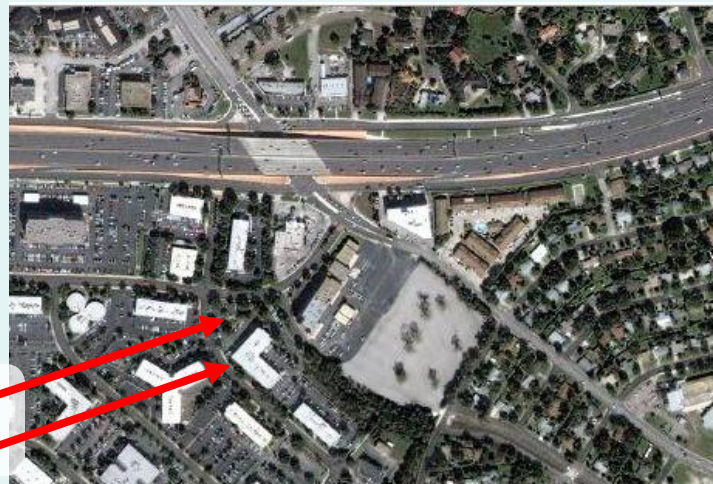
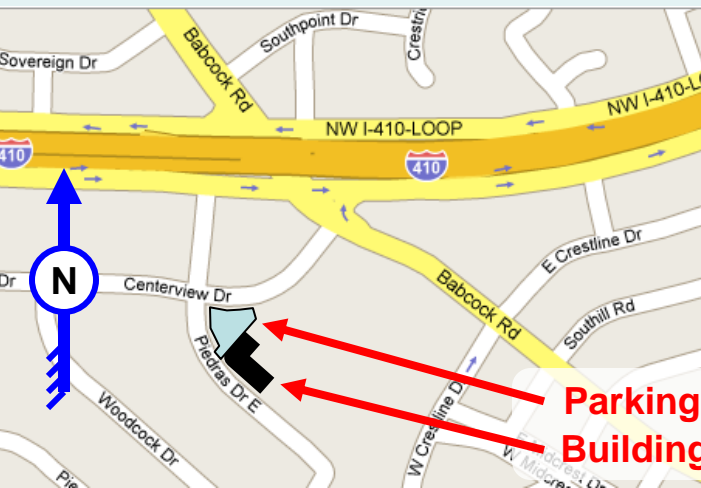
[psimpkins@vitechcorp.com](mailto:psimpkins@vitechcorp.com)

Also presented on Web-Ex at:

<https://vitech.webex.com/vitech/j.php?ED=123930222&UID=0>

Meeting #: 482 496 681

Meeting Location: **4241 Piedras Drive East, Suite 200, San Antonio, Texas 78228**  
(Parking lot and building entrance are on northwest side of building.)



**Parking  
Building**