

# 15 April Topic

## CPS Energy

### Assisting 24<sup>th</sup> AF/NSA Define Services within San Antonio

Our guest speaker this month is Dwain Duke from CPS Energy. He will discuss how new service requests (ranging from new residence and commercial/residential developments to economic development efforts) are processed through the various departments at CPS.

Dwain has worked in the utility business for 22 years. Prior to CPS, he spent 16 years at a local utility consulting company where he provided engineering services to electric cooperatives, municipal utilities, military systems, private utility systems, and investor owned utilities. He currently manages the distribution planning section at CPS responsible for maintaining capacity and supporting reliability across the entire service area. He is a licensed engineer in Texas, Ohio and New Mexico.

***Please join us!***

[www.incose.org/alamo](http://www.incose.org/alamo)

#### Thursday, 15 Apr 10 Agenda

5:30 Networking Social

5:50 Chapter Meeting

6:00 Guest Speaker

*If attending, please RSVP to  
Lynda Myers at  
[lyndamyers@sbcglobal.net](mailto:lyndamyers@sbcglobal.net)*

#### **Questions? Contact:**

**Chris Abts**

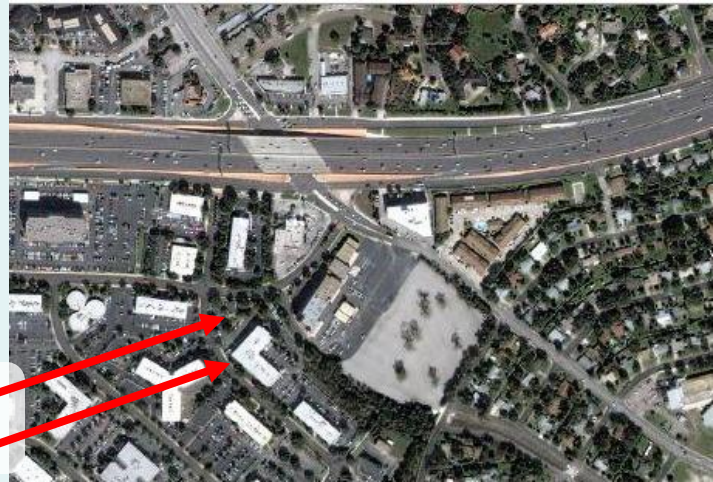
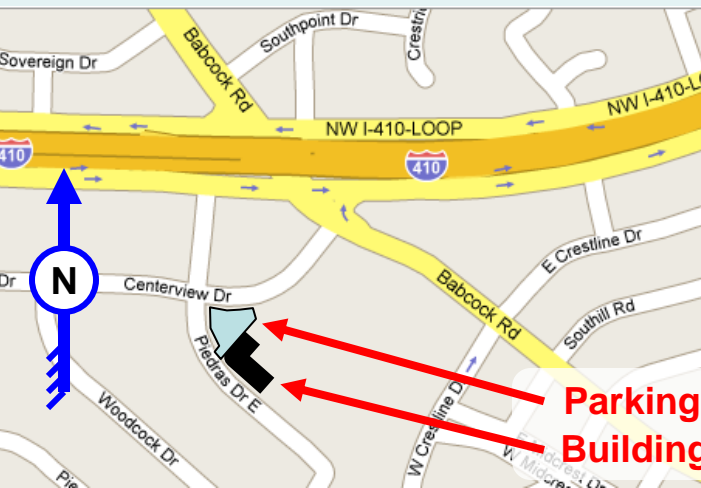
[abts\\_chris@bah.com](mailto:abts_chris@bah.com)

**Lynda Myers**

[lyndamyers@sbcglobal.net](mailto:lyndamyers@sbcglobal.net)

Meeting Location: **4241 Piedras Drive East, Suite 200, San Antonio, Texas 78228**

*(Parking lot and building entrance are on northwest side of building.)*



**Parking  
Building**