



The International Council on Systems Engineering

“BUILDING YOUR CAREER”

Welcome Center Event (2022 March)

Presented By New Member Engagement Team (NMET) (nme@incose.net)



About New Member Welcome Center

- The Welcome Center is a social and virtual forum for INCOSE New Members
- Welcome Center cafes aim to onboard, orient and communicate with new members in their initial INCOSE journey
- Welcome Center New Member Yammer community is an online platform that can be used dynamically by members to connect and engage with other Members and locate INCOSE information

New Member Guides

- Senior/Experienced INCOSE members connect and engage with new members via Welcome Center Café events, online collaboration (Yammer) and informal communication avenues (email, MS Teams chat etc.)

New Member Welcome Center Café Event
Monday, March 28, 12:00 noon Japan Time (Sunday, March 27, 8:00 pm US Pacific)
Thursday, March 31, 5:00pm London Time (9:00 am US Pacific)



Purpose and Agenda

Agenda

- Welcome/Introduction (5 minutes)
- INCOSE Overview (5 minutes)
- Building Your Career: Guest Speaker (20 minutes)
 - Stueti Gupta – Monday, March 28th
 - Richard Beasley – Thursday, March 31st
- Attendee Open Discussion/Q&A Session (25 minutes)
- Conclusion/Welcome Center event feedback (5 minutes)



Vision, Mission & Goals

- Vision
 - A better world through a systems approach.
- Mission
 - To address complex societal and technical challenges by enabling, promoting, and advancing Systems Engineering (SE) and systems approaches.
- Goals
 - Be a focal point for dissemination of systems engineering knowledge
 - Promote international collaboration
 - Assure the establishment of professional standards in systems engineering
 - Improve the professional status of all Systems Engineers
 - Encourage governmental and industrial support for System Engineering
- Visit <https://www.incose.org/about-incose> to view the vision, mission and goals



INCOSE Reach



18000+
MEMBERS



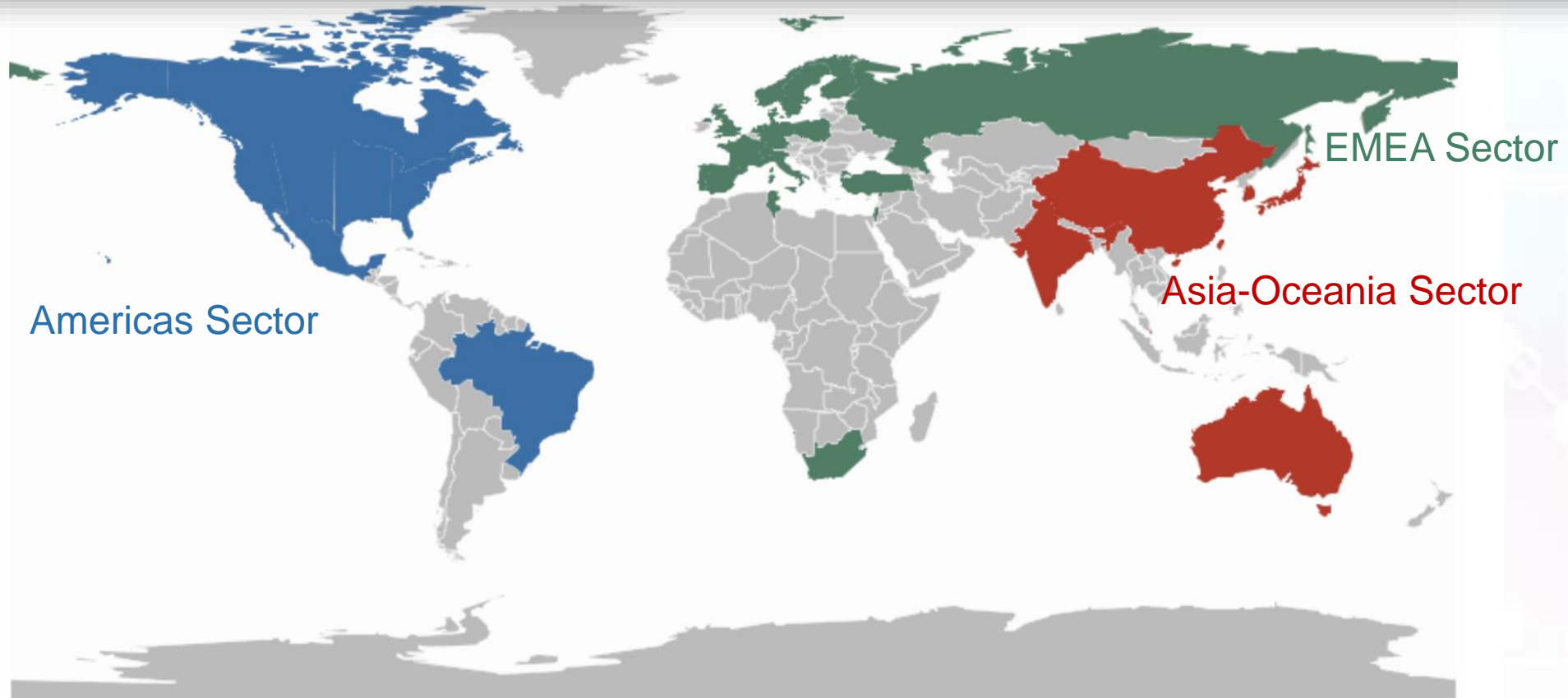
74+
CHAPTERS



55
WORKING GROUPS



3182
CERTIFIED





Certification

Become a certified to advance your recognition in SE

Working Groups

Join a working group to help lead, guide and advance technical knowledge

Chapter Involvement

Become involved in your local chapter STEM programs to support the upcoming generation of SE's

Leadership

Grow, advance and leave an impact by becoming an INCOSE volunteer

Why INCOSE?

[Incose.org/career](https://www.incose.org/career)

Professional Development

Increase technical knowledge through INCOSE webinars, publications, papers and your chapter tutorials

Improve your knowledge and skills

Professional Networking

Connect and engage with your SE peers various INCOSE, sector and chapter events to expand your professional network

Create friendships

Professional Prominence

Advance visibility and impact by becoming involved in developing, publishing, and presenting on SE topics

Share technical knowledge and ideas with the community and across professional organizations

Welcome Center Poll

We want YOUR Feedback on today's Welcome Center event (e.g., chat poll)

1. What did you like about this Welcome Center event focused on the International Workshop?
2. What can be improved for future Welcome Center events?
3. How else do you want to be supported to become more involved within INCOSE?

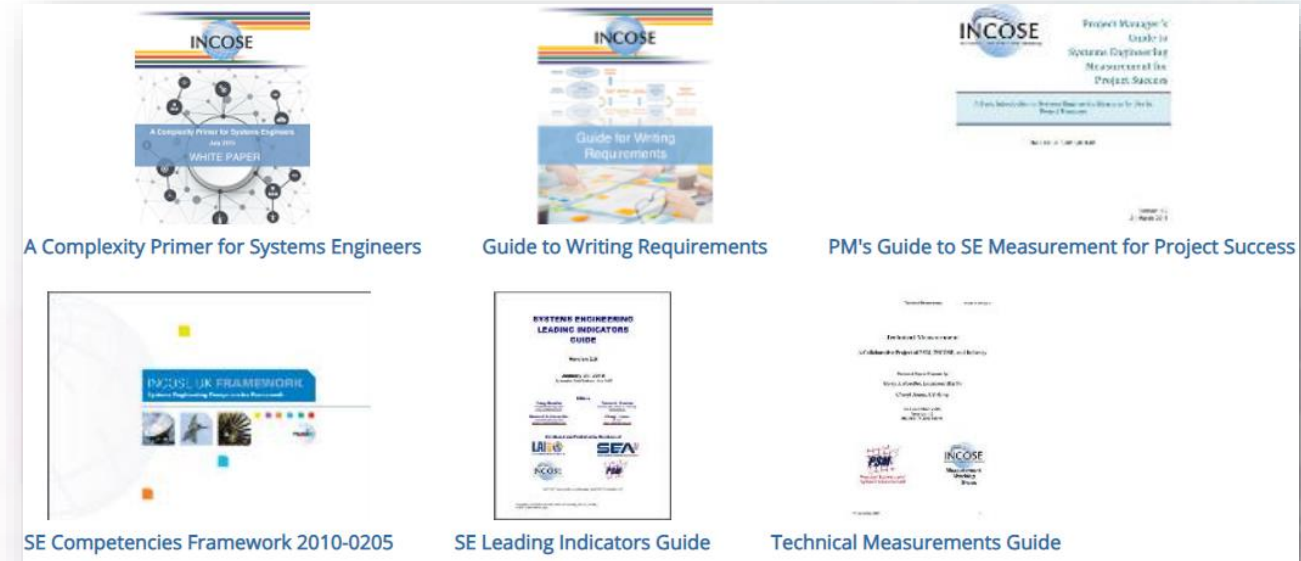
Contact Us @ nme@incose.net

New Member Welcome Center Event



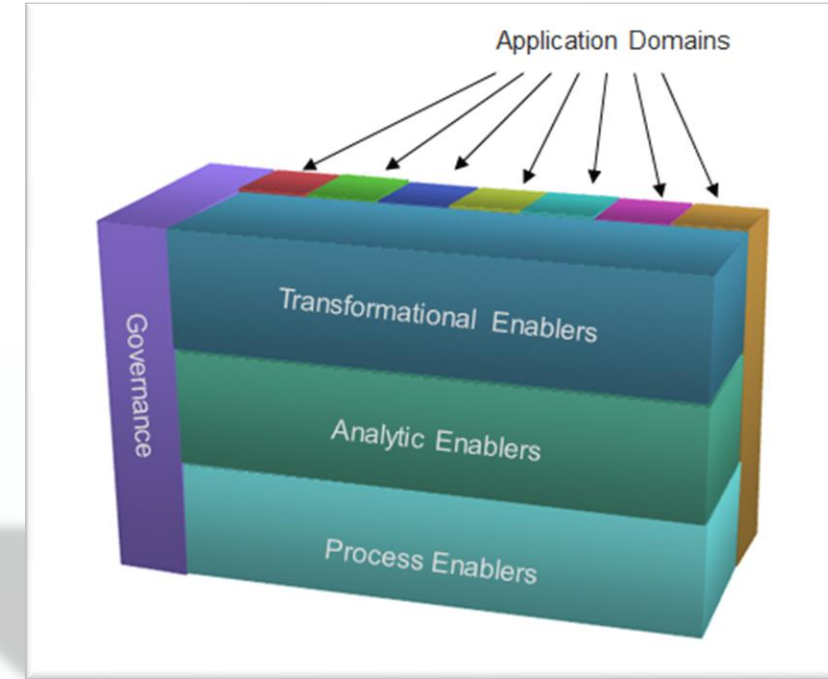
INCOSE Products

- Technical Publications/Products
 - SE Journal,
 - INSIGHT Magazine
 - INCOSE Newsletter
 - Members have access to free soft copy downloads: www.incose.org/pubs
 - **NEW!** Member discount code for all Wiley publications www.incose.org/wiley
- SE Body of Knowledge (SEBOK)
 - <https://www.sebokwiki.org>
- Periodicals
 - www.incose.org/periodicals
- Proceedings/Papers
 - www.incose.org/papers
- INCOSE Store
 - Purchase and order INCOSE products via connect.incose.org/store



Working Groups

- Working Groups (WGs) are the resource practitioners need.
- Participants discuss, collaborate, share in person, and online across more than 60 WGs in INCOSE with a wide diversity of interests.
- INCOSE WG members create products, present panels, develop and review standards.
- View the INCOSE Working Groups - www.incose.org/workinggroups





Working Group Members

- Bring value to other INCOSE stakeholders in your interest area
- Build expertise and contacts
- Help develop and review international standards
- Create products to advance the state, art and practice of Systems Engineering.
- How to Join a Working Group (found on the working group page)
 - Membership in Working Groups is open to any INCOSE member. To join a group:
 - <http://profile.incose.org>
 - Scroll to the bottom left section titled "My Committees and Working Groups"
 - Click the link for "Browse / Join a Working Group"
 - Find the desired Working Group and click on View to see roster; the Join option is at the bottom of the page
 - Additionally, email the Working Group leaders by clicking on their name(s) from the Working Groups page and sending them an email expressing your interest!

Resilient Systems Ken Cureton / John Birds Analytic Enablers	Risk Management Bob Parro / Jack Stein Process Enablers	SE in Early Stage Research & Development A. Hodges / N. Lombardo / H. Hahn / M. Transformational	SE Tools Database John Nallon Transformational	Small Business Systems Engineering Angela Robinson / Claude Laporte / Ken Pack / Transformational
Smart Cities Initiative Jennifer Russel Initiative	Social Systems Erika Palmer Analytic Enablers	Soft Skills Sean McCoy / J. Wojcik / C. Whitcomb Transformational	Space Systems David Kaslow Application Domains	System of Systems Alan Harding Analytic Enablers
System Safety Duncan Kemp / Meaghan O'Neill / Russell Kubycheck Analytic Enablers	Systems and Software Interface Nick Guertin Transformational	Systems Engineering Quality Management (SEQM) Barclay Brown Process Enablers	Systems Science Javier Calvo Transformational	Systems Security Engineering Rick Dove Analytic Enablers
Telecommunications John Risson Application Domains	Tools Integration & Model Lifecycle Management John Nallon Transformational	Training Gabriela Coe / John Clark Analytic Enablers	Transportation Dale Brown / Denis Simpson / Allison Ruggiero Application Domains	Value Proposition Initiative Juan Amenabar / Ken Harmon

How to Join a Working Group

Membership in Working Groups is open to any INCOSE member. To join a group:

- Log into your INCOSE account
- Go to your Profile Page, and scroll to the bottom left section titled "My Committees and Working Groups"
- Click the link for "Browse / Join a Working Group"
- Find the desired Working Group and click on View to see roster; the Join option is at the bottom of the page
- Additionally, email the Working Group leaders by clicking on their name(s) from the Working Groups page and sending them an email expressing your interest!

<https://www.incose.org/incose-member-resources/working-groups>



Chapters & Groups



74

CHAPTERS



35

COUNTRIES



55

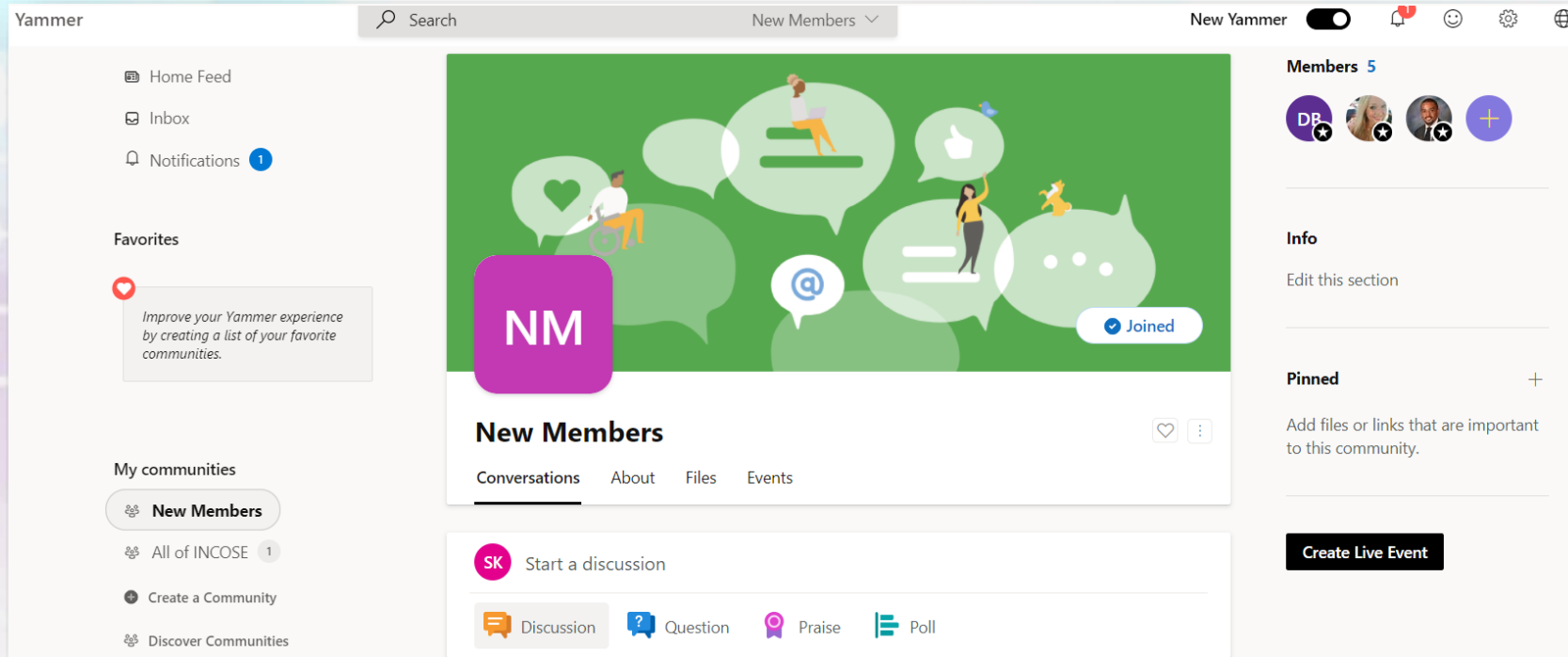
WORKING GROUPS

- At the heart of INCOSE is the ability to connect people.
- Whether you are interested in increasing your circle of influence, or in working on an issue, INCOSE Chapters and Working Groups offer unparalleled points of connection.
- Search for an INCOSE chapter - www.incose.org/chapters



New Member Yammer Community

- New Yammer community will be created
- This is a community for YOU, INCOSE New Members to network and discuss topics of interest
- www.yammer.com and login with your @incose.buzz account when assigned





INCOSE Web Site – www.incose.org

- The INCOSE website IS the way to access the latest information and resources
- Visit www.incose.org to log into your INCOSE account, access your profile, assign your INCOSE chapter, access publications and so much more!

Purchase and download INCOSE publications

Use your login ID and password to access the intranet

The screenshot shows the INCOSE website homepage. At the top, there is a navigation bar with links for "Collaboration Portal 'Connect'", "Store", and "Contact us". On the right, there is a search bar, a "New!" button, and links for "Join us" and "Login". The main content area features six large tiles with images and text:

- WHAT IS SYSTEMS ENGINEERING?** Learn about this impactful field. (Image: A person holding a glowing lightbulb with circuit lines.)
- INCLOSE'S IMPACT** Leading the future of Systems Engineering. (Image: A globe with circuit lines.)
- GROW IN SYSTEMS ENGINEERING** Shape the world and advance your career. (Image: A hand holding a ladder against a blue sky.)
- STAY CONNECTED** INCOSE news and events. (Image: A busy exhibition hall.)
- FROM THE CUTTING EDGE** Impactful products and state-of-the-art research. (Image: A hand pointing at a screen displaying a hexagonal diagram with terms like CONCEPT, SUCCESS, STRATEGY, CREATIVE, PLANNING, ANALYSIS, and INNOVATION.)
- FIND YOUR COMMUNITY** Get involved with INCOSE near you. (Image: A group of people sitting around a table with a world map in the background.)

At the bottom, there is a footer with the text "INCOSE virtual Events and Resources" and a "New to INCOSE?" button. A banner at the very bottom states: "Like all organizations, INCOSE is monitoring the COVID-19 situation throughout the world and adapting to".

Callouts from the left side of the slide point to specific features on the website:

- A callout points to the "Store" link, stating: "Purchase and download INCOSE publications".
- A callout points to the "Collaboration Portal 'Connect'" link, stating: "To collaborate with working groups and teams go through the Portal".
- A callout points to the "Login" link, stating: "Use your login ID and password to access the intranet".
- A callout points to the "New to INCOSE?" button, stating: "Locate New Member information".



Corporate Advisory Board

- The INCOSE Corporate Advisory Board (CAB) is the voice of the industry to the INCOSE leadership, leading to the development of systems engineering products and input to standards to meet their needs.
- Learn more about the CAB and access application forms at www.incose.org/cab
- Why should a **company** join the INCOSE CAB?
 - CAB membership allows your organization to guide the direction of the discipline.
 - Employees can gain access to the state-of-the-art products.
 - Align with peers and fellow industry leaders, grow your global footprint, and learn about how other industry leaders are applying systems engineering to solve business problems.
 - Gain better access to talent – find and hire competent, certified Systems Engineers through your INCOSE connection.



INCOSE Events

- INCOSE conferences events and news information is located at www.incose.org/events
- At this site, you will find a listing of upcoming informational sessions, a link to the annual International Working Group (IW) and the International Symposium (IS) conferences.

INCOSE Events

INCOSE keeps you connected with news from the field and a variety of ways to meet and network with the largest global systems engineering community throughout the year.



32nd Annual **INCOSE**
international symposium

hybrid event

Detroit, MI, USA
June 25 - 30, 2022

To find regional or specialized events, search here:

Upcoming Events

- | | |
|----------|--|
| Mar 2022 | San Diego Chapter Presents Southern California Edison's Vision for Reimagining the Grid
Mar 30, 2022 - Mar 30, 2022 |
| Mar 2022 | INCOSE/GfSE Webinar 5: Lessons Learned of the introduction of Systems Engineering
Mar 30, 2022 - Mar 30, 2022 |

News Highlights


- Message from the President No. 1 – Update on INCOSE Travel for Operations
Mar 23, 2022
Update on INCOSE Travel from Marilee Wheaton, INCOSE President.
- Joint INCOSE-ASME Standards Development Effort
Feb 14, 2022
- Latest Issue of the Journal Systems Engineering Published

New Member Welcome Center

Many Resources for New Members

- Recordings and presentations from past New Member Café Events
- About INCOSE Overview
- Ways to engage in INCOSE
- Learning and Development
- Publications
- Growing your Career

Collaboration Portal "Connect"
Store
Contact us



New! Search
ENHANCED BY
Join us
Login

A better world through a systems approach

INCOSE Privacy Statement
INCOSE Membership
Leadership & Organization
INCOSE Foundation
INCOSE Recognition
New Member Welcome Center

Principles & Values
Strategic Objectives
Transformation
Volunteers
Policies and Bylaws
Contact Us
Technical Leadership Institute
Community


INCOSE New Member Welcome Center

Welcome! The International Council on Systems Engineering (INCOSE) is a not-for-profit membership organization founded in 1990 to develop and spread the interdisciplinary principles and practices that enable successful systems. We have grown to more than 19,000 members meeting in over 65 local chapters in over 75 countries which translates to boundless opportunities to network, learn and have fun.


As members we represent a broad spectrum – from student to senior practitioner, from technical engineer to program and corporate management, from science and engineering to business development. We work together to advance our technical knowledge, exchange ideas with colleagues, and collaborate to advance systems engineering. There are many exciting challenges ahead and we are glad you are joining us!


Below is an overview of INCOSE – our organization, available resources and opportunities for involvement. Use the links provided to learn more.


For new member questions and inquiries, contact us at nme@incose.net.




19000+ MEMBERS


65 CHAPTERS


50 WORKING GROUPS


3976 CERTIFIED

www.incose.org/newmember

How INCOSE Helped My Career

Richard Beasley – RR – 1986- 2022 (and beyond!)

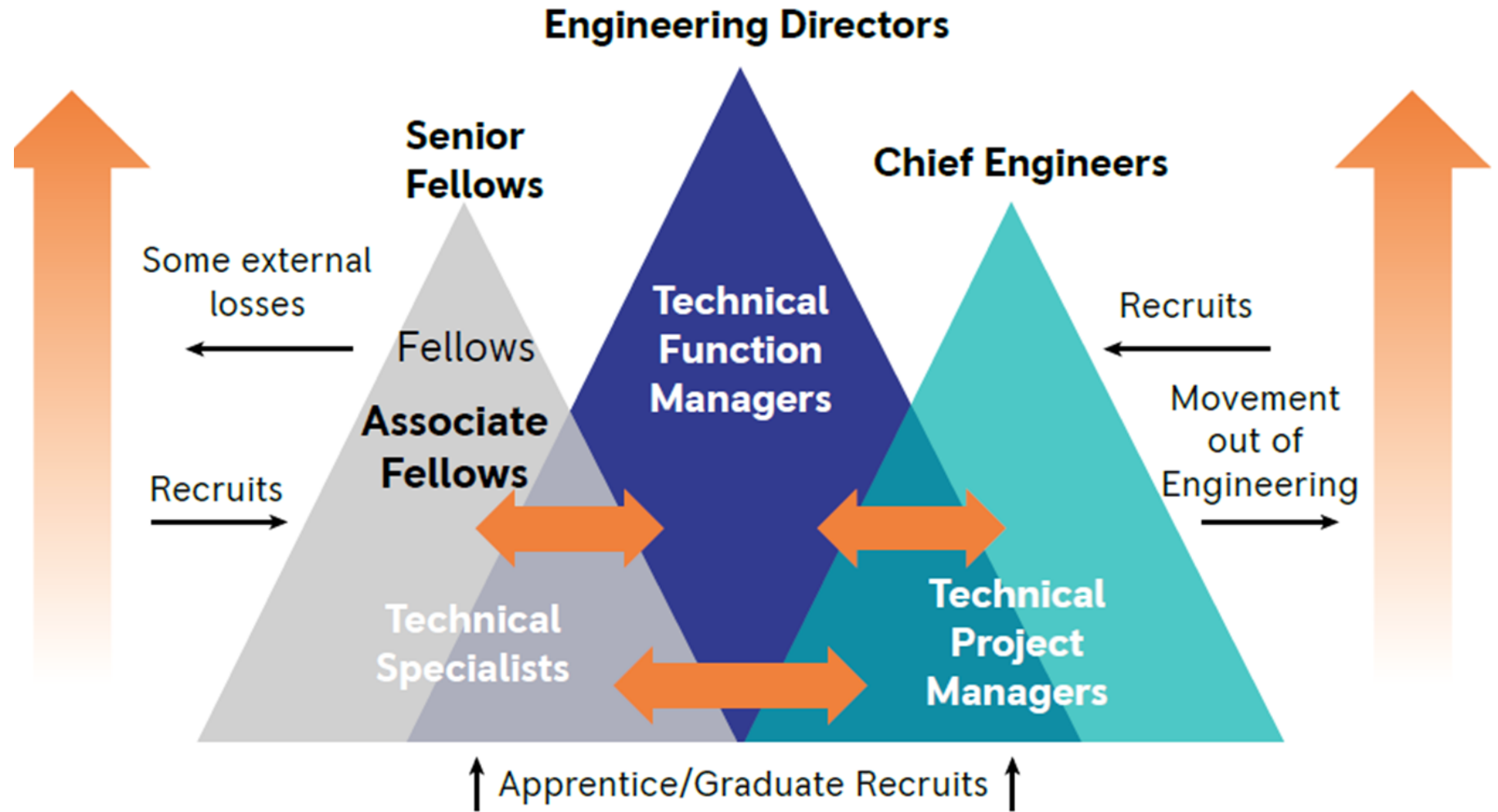
Associate Fellow – Systems Engineering

March 2022

I joined Rolls-Royce in 1986 as a graduate trainee (with Physics degree)

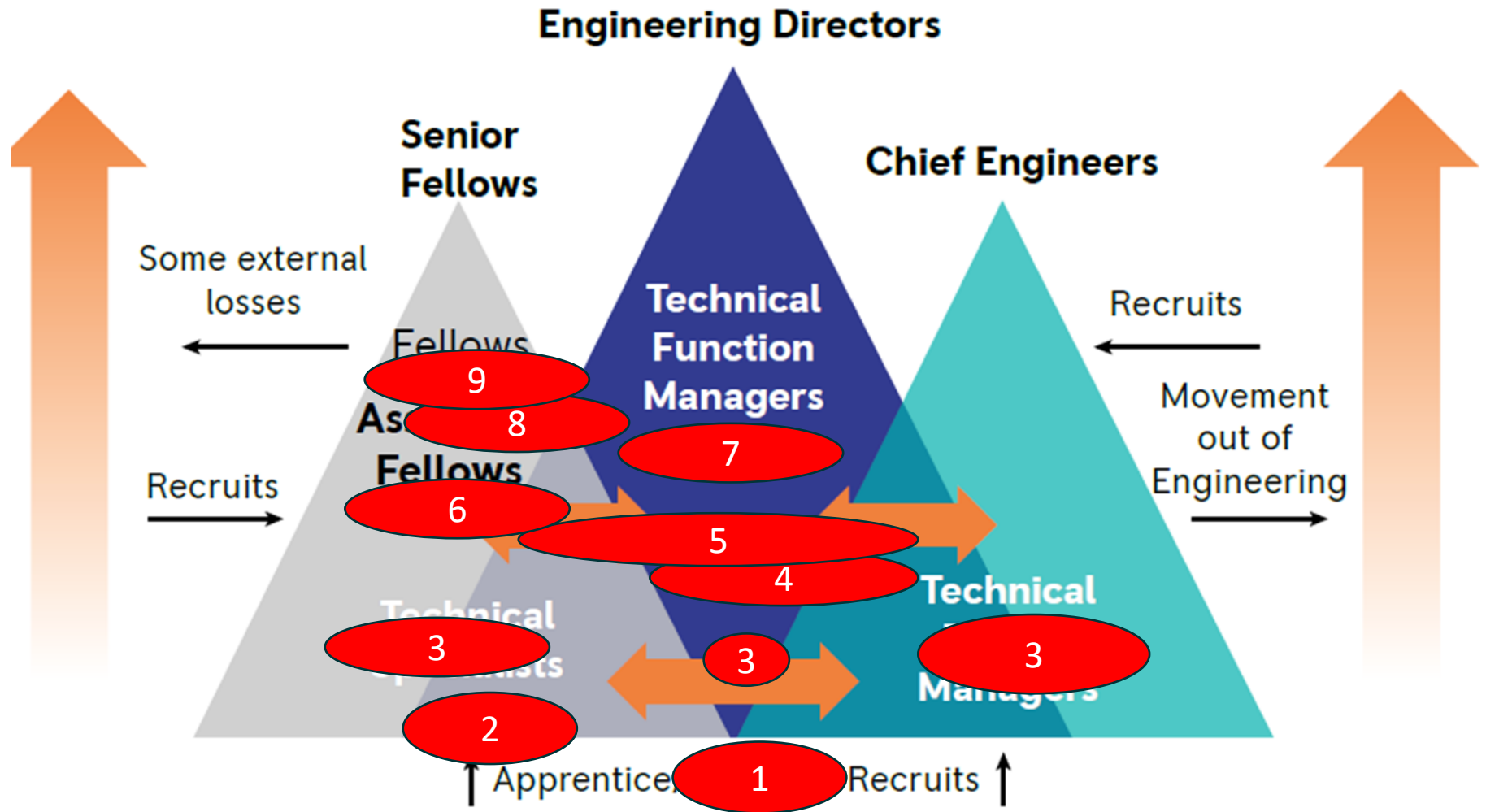
In 2011 I was appointed an Associate Fellow

I joined INCOSE in 2006



Rolls-Royce Engineering Career Paths

- 1) Grad trainee / installation aero
- 2) Stealth engineering
- 3) Stealth R&T lead
- 4) Chief of Power System integration
- 5) Chief of Lifecycle Engineering
- 6) Chief of System Design Integration
- 7) Head of SE / PMiE
- 8) Specialist SE / Global Chief of SE capability
- 9) Associate Fellow SE

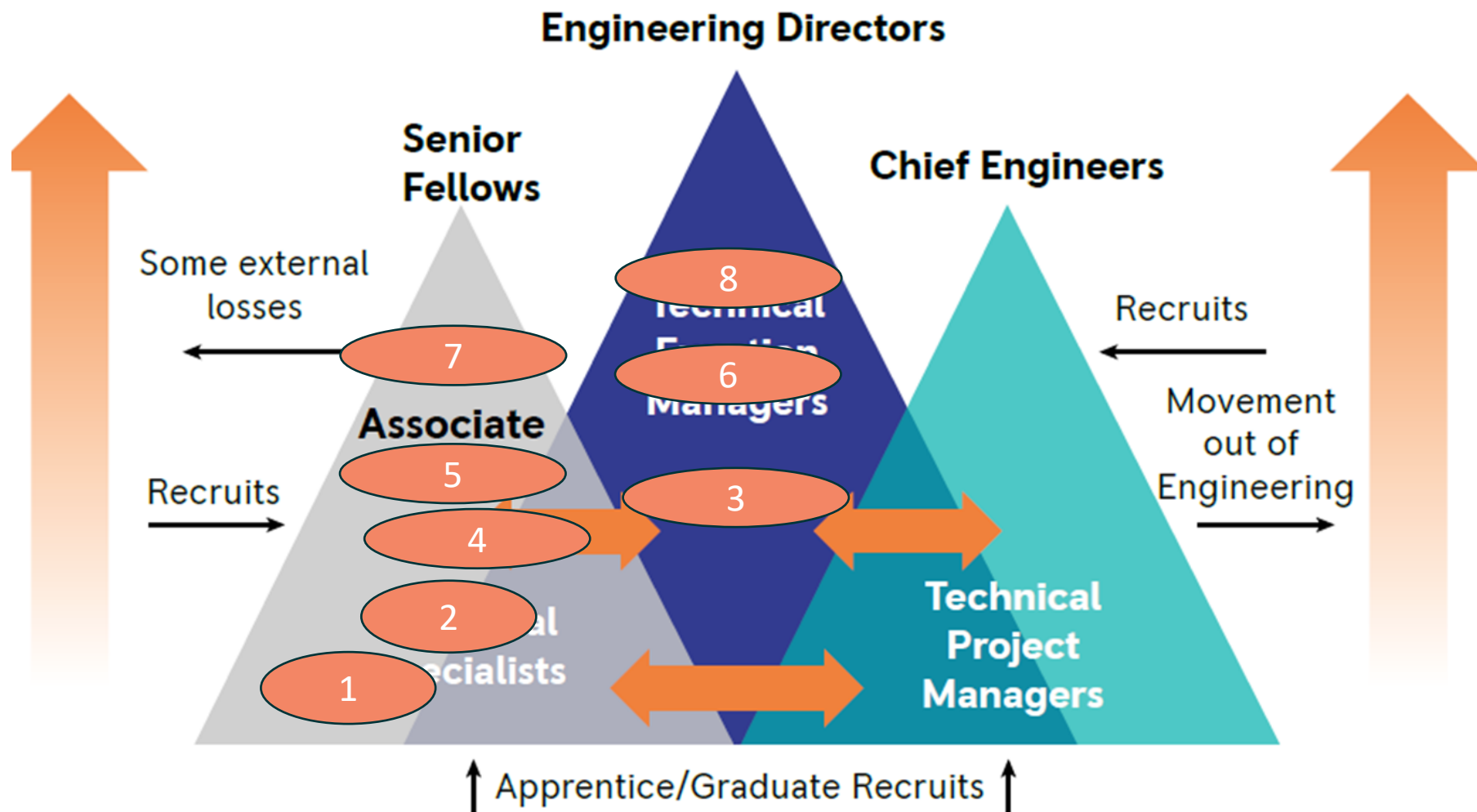


Lots of moving about, in discipline as well as role

Never really did a “project” role

My final specialism wasn't defined / known when I joined Rolls-Royce!

- 1) Member RAeS (2000), then CEng (2001), then Fellow (2007)
- 2) Member INCOSE (from 2006). Awarded ESEP 2018)
- 3) Role on INCOSE Bristol Local group (2008-2012)
- 4) BKCASE author (2009-2012)
- 5) Bristol Uni Visiting fellow (2011-2019) (non-INCOSE)
- 6) President INCOSE UK (2012-2018 – inc pres-Elect and Past president – included Master of Ceremonies at IS16 in Edinburgh)
- 7) INCOSE International Competency working group (2010-2018)
- 8) INCOSE Services Director (2020-2024 – Deputy 20-22, Director 22-23))



How INCOSE and other professional society activities mapped onto this
 Plus a number of papers from 2009 onwards (including two best papers)

- Reflection on practice to validate specialism
- Working with multiple (non-RR co-authors) to develop more diverse viewpoints on SE practice

INCOSE is about the people you meet and friendships you make

Image from evening socialising at IS17 in Adelaide

In picture are

- PM for event
- Three panellists
- Authors of at least 5 IS17 conference papers



Have a Career Plan

- **Invest In The Time to Reflect**

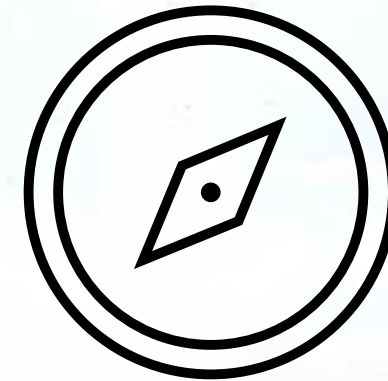
- What are your aspirations? What do you want to be known for?
- Determine and write your SMART goals – specific, measurable, achievable, relevant and time-bound (example: [Indeed](#))
 - What do you want to achieve in a year, 5 years, 10 years?
 - Think about what you like/don't like in the field of systems engineering.

- **Do Your Research**

- Identify emerging SE trends (the *INCOSE SE Vision 2035* can inform your research)
- Research your organization's strategic and operational direction
- Research educational /certification opportunities to hone or update your skillset

- **Write Down and Revisit Your Career Plan**

- Lots of job sites ([SHRM](#), [Indeed](#), LinkedIn etc.) have guidance and templates of Career Plans
- Periodically revisit and refine your career plan. Find a mentor to validate and help inform your career journey
- Reference valuable INCOSE opportunities at [Grow in SE \(incose.org\)](#)



Guide Break out Time

Ask questions, discuss lesson learned, gain more insight into the IW experience

Back Up

Why INCOSE?

Professional Development

Increase your technical knowledge through INCOSE webinars, publications, papers and your chapter tutorials

Improve your knowledge and skills

Professional Networking

Connect and engage with your SE peers various INCOSE, sector and chapter events to expand your professional network

Create friendships

Professional Prominence

Advance your visibility and impact by becoming involved in developing, publishing, and presenting on SE topics

Share your technical knowledge and ideas with the community and across professional organizations

Working Groups

Join a working group to help lead, guide and advance technical knowledge

Chapter Involvement

Become involved in your local chapter STEM programs to support the upcoming generation of SE's

Certification

Become a certified to advance your recognition in SE

Leadership

Grow, advance and leave an impact by becoming an INCOSE volunteer