

# INCOSE Los Angeles Chapter

## Monthly Speaker Meeting

Tues. November 8, 2022

*Thanks for joining!*  
*Everyone is Welcome Here!*



# Agenda

---



5:30 PM – Introductions and Networking

6:00 PM – President's News & Events

6:10 PM – INCOSE's Professional Development Portal

6:20 PM – Bo Oppenheim, *Lean Healthcare Systems Engineering*

7:15 PM – Q&A

7:30 PM – Adjourn meeting

# Save the Date: ***Sat. Dec. 10, 2022*** INCOSE-LA Chapter Holiday Dinner



**You are cordially invited!**  
**LA Chapter Holiday Dinner**  
**Join us in person!**  
**Sat. 12-10-22, 6:30 -8:30 pm**

**Buca di Beppo Italian Restaurant**

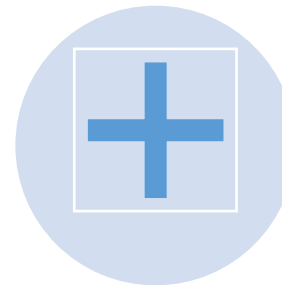
**1670 S Pacific Coast Hwy**

**Redondo Beach, CA 90277**

***Please RSVP to email invite by Dec. 6***





**Dinner provided for  
\$20 per person**



**Plus-one is welcome**

# Join us for the Annual INCOSE International Workshop

	January 28 to 31, <b>2023</b>		<b>Hybrid Event</b> Torrance Marriott Redondo Beach 3635 Fashion Way Torrance, California 90503 - USA
---	----------------------------------	---	--

- What is the International Workshop?
  - Hundreds of participants from all over the world come to Torrance, CA or join online and work together on systems engineering--building the practice, developing new methods, and sharing their knowledge through publications.
  - There's so much to learn and so many opportunities to share your knowledge!
- 
- Sat 01-28-2023 Mark your calendars! Please plan to join us!
    - INCOSE-LA Meet and Greet in the Lounge Area
    - Torrance Marriott Redondo Beach on 01-28-23.
      - Watch this space for further details!

# Welcome New INCOSE-LA Members!



#	Last	First	Company	Join Date
1	Barchichat	Emile	ManTech International	10/14/2022
2	Beauchamp	Frances		10/23/2022
3	Estrada	Michael	Epirus	10/13/2022
4	Herbert	Eric	Aerospace Corporation	10/31/2022
5	Hohng	John	Naval Postgraduate School	10/18/2022
6	Inkeles	Andrew	ManTech International	10/10/2022
7	Mueller	Graham	USAF Defense Acquisition Univ.	10/29/2022
8	Orner	Brandon		10/18/2022
9	Pelayo Razo	Gamaliel	Embry Riddle Aeronautical Univ.	10/20/2022
10	Wall	Pernell		10/23/2022
11	Wendling	Michael		10/23/2022

**INCOSE-LA** - 449 members worldwide

- Recognized as Gold Circle Award Chapter for reaching highest goals and standards
- Quarterly Tutorials, monthly Speaker Mtgs
- Yearly SEP Knowledge Study Cohorts

Join the ***November*** New Member Welcome Center Café

Learn about the unique annual event we call the [INCOSE International Workshop](#)

**Choose from any of the sessions this month:**

- [Register](#) Nov 17, 2022, 04:30-05:30 PM London Time
- [Register](#) Nov 28, 2022, 03:30-04:30PM Pacific Time (US and Canada)
- [Register](#) Nov 30, 2022, 09:00-10:00 AM Mumbai, Kolkata, New Delhi Time





# Ground System Architectures Workshop (GSAW) 2023

For more info: <http://gsaw.aero.org>; GSAW Committee, Aerospace Corp., 310-336-0454, [gsaw@aero.org](mailto:gsaw@aero.org)

## Dates:

- February 22 – 23, 2023 : Tutorials, Virtual sessions only;
- February 27 – March 2, 2023 : General session, Hybrid (In-person and virtual) at The Aerospace Corporation, El Segundo, CA
- **Classified Session:** Will be held in-person on March 2, 2023, at The Aerospace Corporation El Segundo, California. All attendees must possess a TS/SCI clearance and be a U.S. Citizen.

## DEADLINES:

- Abstracts/proposals due: Oct. 24, 2022
- Notification of acceptance: Nov. 28, 2022
- Accepted presentations due: Jan. 23, 2023

The 27th annual Ground System Architectures Workshop (GSAW) provides a forum for the world's space-related ground system experts to collaborate with their peer ground system users, developers, and researchers through tutorials, presentations, working groups, panel discussions, and technical exhibits. GSAW 2023 welcomes attendees and presenters for the Tutorials, General Session including Working Groups, Plenary Presentations, and Technical Exhibits.

2023 theme, "Stronger Together: Improving Interoperability for Users and Operators," invites you to share your ideas, emerging technologies, and roadmaps for the future. **Current focus is on leveraging interoperability for enterprise capabilities and data beyond individual programs to Consumers and Operators and improving their User Experiences.**

An outcome of the working model of the past two years is a renewed emphasis on remote and hybrid operating models to support both operations resiliency and workforce needs. We look to the ground systems community to share their insights, perspectives, and approaches on interoperable architectures and innovations, and especially in areas that could assist, engage, or improve operations and users.

Opportunity	Location	Duration
Tutorial	Virtual	Instruct a 2.5-hour session
Plenary Presentation	•General Session: Hybrid (In-person+virtual) •Classified Session: In person	Present a 15-minute talk describing your work progress, or case studies. Award for Best Presentation
Working Group	Hybrid (In-person + virtual)	Lead a 2.5-hour collaborative session
Poster	In-Person	Present a 30" x 40" poster on display during lunches and evening event
Poster	On-Demand	Submit digital file for On-Demand viewing
Tech Exhibit	In-Person	Table to demonstrate products and capabilities during a 2.5-hour evening event
Technical Demo	On-Demand	Demonstrate products and capabilities by submitting a pre-recorded video - available to registrants On-Demand.

# New! INCOSE's Professional Development Portal



Check out INCOSE's new [Professional Development Portal](#)

- Enhance your Systems Engineering knowledge and skills
- Conduct competency self-assessment based on INCOSE's Sys Eng Competency Framework
- Search Content Catalog of 700 learning resources - INCOSE technical products, mini-courses
- Develop a custom Professional Development Plan online



# Competency Self- Assessment

## Professional Competencies

Behavioral competencies well-established within the Human Resources (HR) domain. To facilitate alignment with existing HR frameworks, where practicable, competency definitions have been taken from well-established, internationally-recognized definitions rather than partial or complete re-invention by INCOSE.

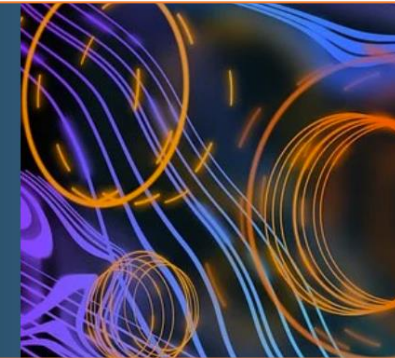
Self-Assess



## Technical Competencies

The ability to perform tasks associated primarily with the suite of Technical Processes identified in the INCOSE SE Handbook.

Self-Assess



## Core Competencies

Core competencies underpin engineering as well as systems engineering.

Self-Assess



## Management Competencies

The ability to perform tasks associated with controlling and managing Systems Engineering activities. This includes tasks associated with the Management Processes identified in the INCOSE SE Handbook, as well as systems engineering.

Self-Assess

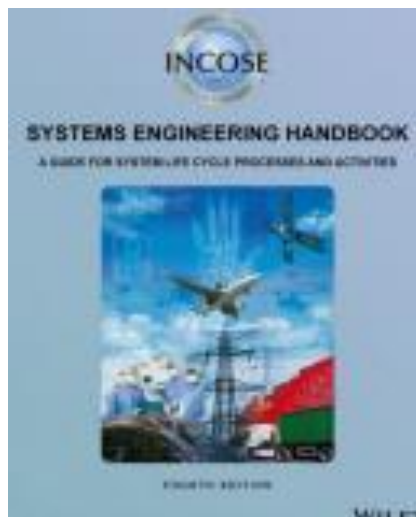


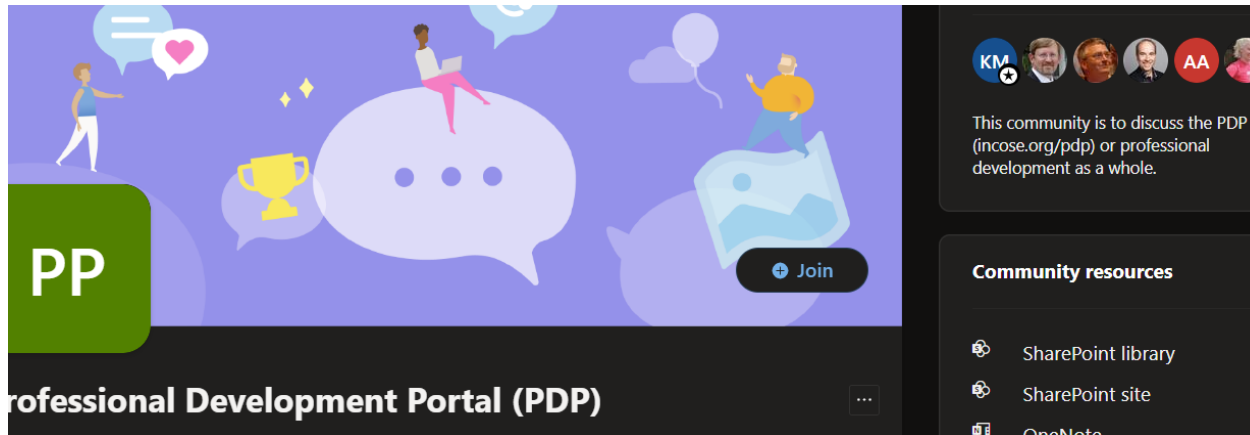
Guide to Writing Requirements

**DEFINITION**

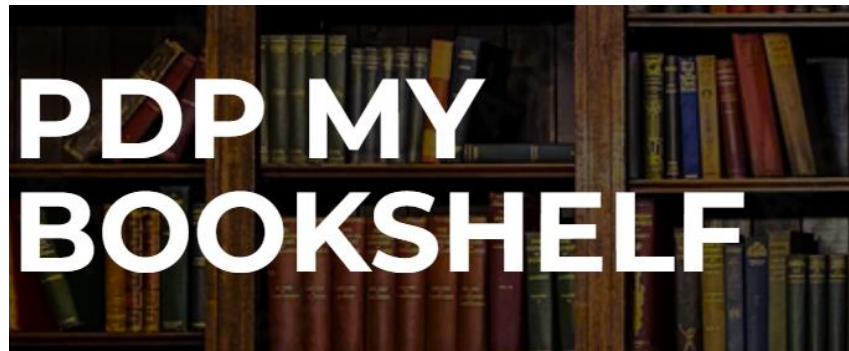
Systems Engineering Leading Indicators  
Guide, version 2.0. INCOSE-TP-2005-001-  
03.

**SEARCH THE  
CONTENT  
CATALOG**





*Join INCOSE online  
Yammer Community  
and stay up to date*



**Do I have to login to the INCOSE website to access the PDP's My Bookshelf capability? –**  
ANSWER: Yes, only INCOSE Members that are logged into the incose.org website will be able to store and review learning resource results cards in their My Bookshelf.

**Where are the items on the PDP User's My Bookshelf stored? –**  
ANSWER: All the information from the user's My Bookshelf is stored in the individual member's user profile in the INCOSE Member's database. The My Bookshelf capability is not available to non-members.

## Tonight's Speaker Meeting:

### Comparing new LHSE Process with former Quality Initiatives: Lean, Six Sigma, TQM



#### **Presenter: Bohdan "Bo" W. Oppenheim**

- Professor Emeritus and Director (Ret.)
- Healthcare Sys. Eng. Graduate program
- Loyola Marymount University

#### **Lean Healthcare Systems Engineering**

- Traditional healthcare projects not successful; formal requirements were not defined
- New process adopted for design projects in clinical environments, including hospitals, operating suites, emergency departments
- Uses rigorous requirements, validation and verification methods
- Uses formal risk and opportunity analysis and mitigations
- Particularly effective in eliminating the notorious fragmentation in healthcare systems

**INCOSE Biomedical Working Group**