

# SEPTEMBER PROGRAM

St. Louis Chapter Missouri Society of Professional Engineers

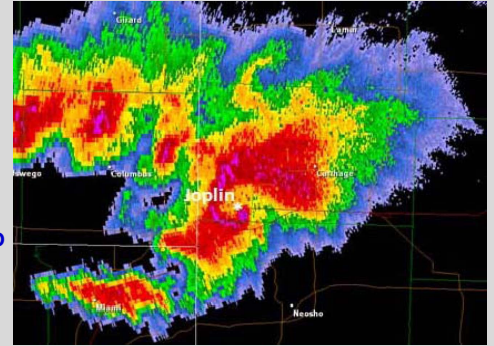


## "SAVE Coalition Joplin EF-5 Deployment"

(Sponsored by the MSPE and ASCE St. Louis Chapters, INCOSE and the Engineers Club of St. Louis)

**Guest Speaker: Mr. Benjamin A. Ross, P.E., P.T.O.E.**

**Date:** Thursday, September 29, 2011  
**Location:** Engineers' Club of St. Louis  
4359 Lindell Blvd.  
St. Louis, MO 63108  
**Time:** Registration at 11:30 am/Lunch at Noon  
Program to follow  
**Cost:** \$20.00 ; Please RSVP by Friday, September 23, 2011 to  
Kurt Krispin at the Engineers' Club.  
Phone: (314)533-9333 or  
Email: [kurt.krispin@engineersclub.net](mailto:kurt.krispin@engineersclub.net)



Following the devastating EF-5 tornado on Sunday May, 22<sup>nd</sup>, 2011, late Tuesday evening, May 24<sup>th</sup>, the City of Joplin requested help from SEMA to inspect damaged buildings. On Wednesday, S.A.V.E. Southwest Regional Coordinator Bud Rodgers deployed to Joplin to meet with City officials, make a field reconnaissance of the damage area, and lay the ground work for the S.A.V.E. deployment. The damaged area was over 10 miles long and up to one mile wide. Ben Ross served as the Site Coordinator and was based in the Public Works Department of Joplin City Hall. Over the next three days, May 26 - 28, between 22 and 62 S.A.V.E. members per day volunteered over 1,100 total hours inspecting damaged buildings. S.A.V.E. members worked in 23 separate teams during the last day of the deployment. The inspections were exterior only and were intended to identify structural life safety problems. Tornado damage ranged



from total destruction with only a floor slab remaining to broken windows and minor roof damage. Of the inspected buildings, approximately 36% were found to be unsafe, 6% had restricted use, and 58% did not present life safety problems.

Benjamin Ross graduated with a Bachelors of Science in Civil Engineering degree from the University of Missouri-Columbia in 1994 and is a licensed Professional Engineer in four states. He is a project manager with Engineering Surveys and Services in Columbia, Missouri, where he works mainly on municipal infrastructure design and site development projects. Ben has been a Missouri SEMA Structural Assessment and Visual Evaluation (SAVE) Coalition volunteer since 1995. He has represented the American Society of Civil Engineers on the SAVE Coalition board for over 10 years and serves as SAVE's Alternate Statewide Coordinator. Ben is a volunteer on the City of Columbia's Community Emergency Response Team and is a past state president of the Missouri Society of Professional Engineers and a past co-chair of the Pioneer Trails Regional Planning Commission's Transportation Advisory Council.

