

INCOSE: A Better World Through a Systems Approach

*The global professional association
for systems engineers*



International Council on Systems Engineering
A better world through a systems approach

www.incose.org

Vision and Mission

VISION: A better world through a systems approach

MISSION: To address complex societal and technical challenges by enabling, promoting, and advancing Systems Engineering and systems approaches

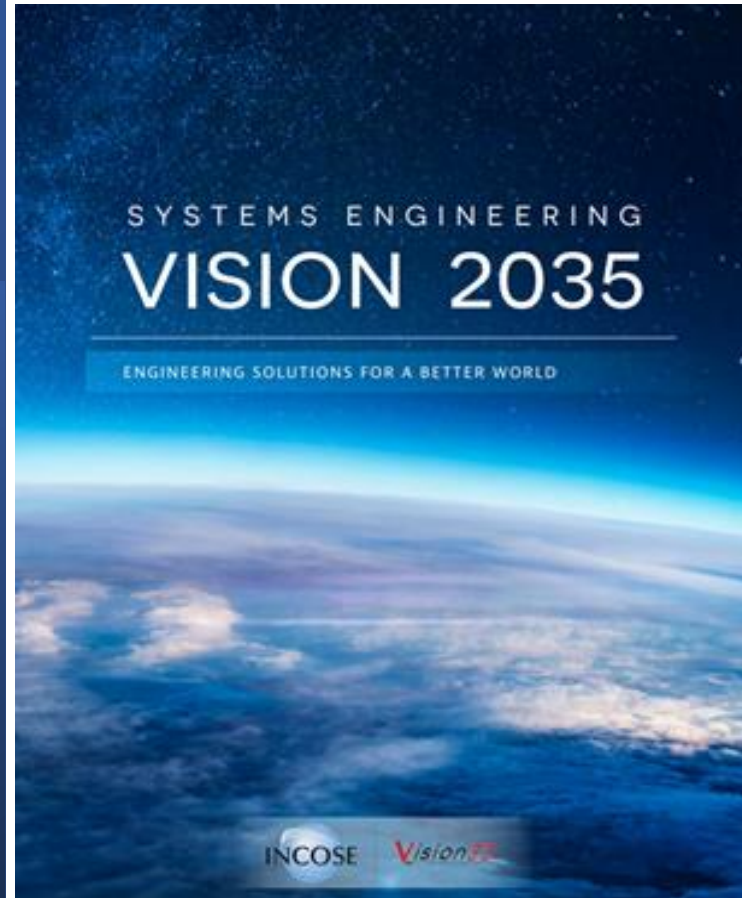
OBJECTIVE: Global leader for systems engineering professionals for career development

FUTURE: Lead the future of systems engineering, academically, in emerging domains, and in practice



Systems Engineering Vision 2035

[SE Vision 2035 Web site](http://incose.org/sevision)



incose.org/sevision

This **Systems Engineering Vision** was sponsored by **INCOSE** and produced by a team of **leaders** from the systems community, with inputs from across **industry, academia, and government**.

The **Systems Engineering Vision 2035** addresses:

The **Global Context** for Systems Engineering

The **Current State** of Systems Engineering

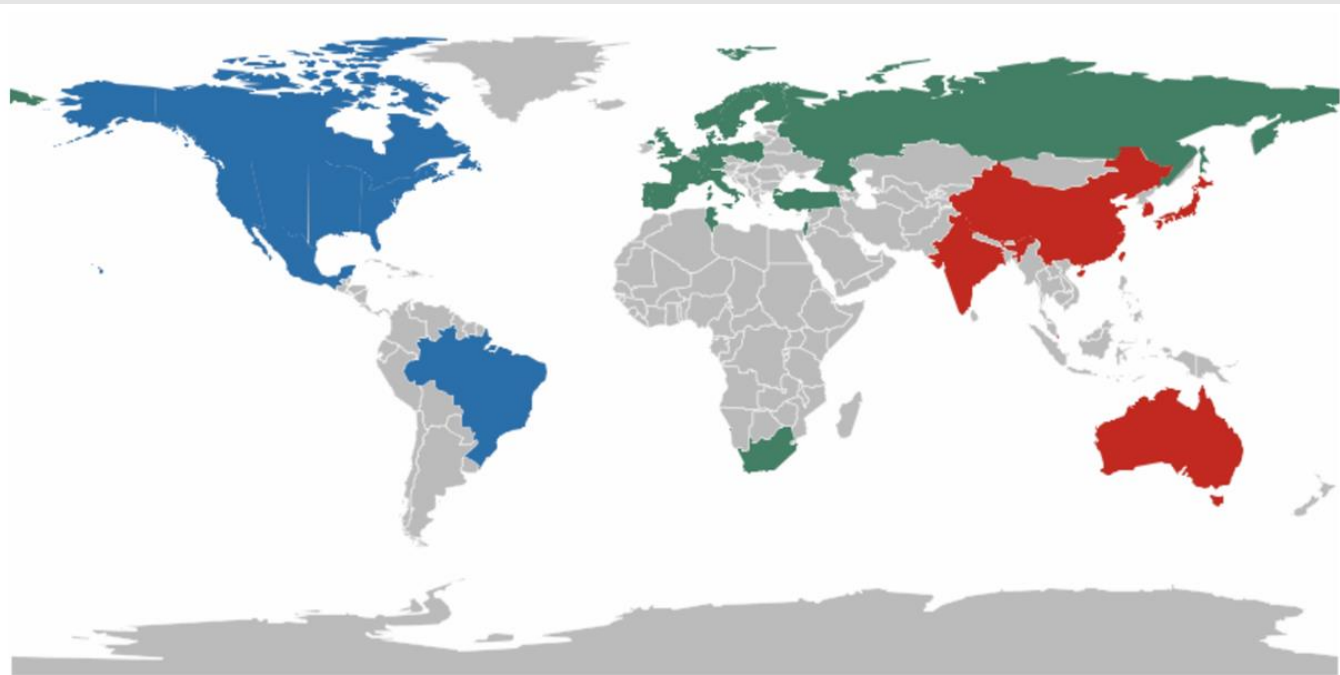
The **Future State** of Systems Engineering

Realizing the Vision

*We encourage you to work with **INCOSE** to help realize this vision.*

The complete **Systems Engineering Vision 2035** is available as a website and pdf

INCOSE: The International Council on Systems Engineering



- Connect systems engineers professionals
- Educational tools
- Resources they need
- Networking events
- Virtual platforms
- Handbooks and publications
- Career development
- Advancement through products and services
- Developing global community
- Problem solving through systems approaches
- Forward thinking
- State-of-the art
- Certification

Global Impact



Why Join INCOSE?

INCOSE is the global Systems Engineering professional society – providing the **opportunity for life-long learning** in systems approaches

A community of peers, **resources** for your **career**, and a place to be a **leader**

INCOSE members stand out and are often sought after as **experts**. INCOSE members share practices and learn from each other.

INCOSE members create **products**, produce **events** and represent the organization in international forums.

INCOSE members increase the body of knowledge and **advance the practice** of systems engineering.

Network with nearly 19,400 members in 76 countries

Increase your professional stature with the INCOSE Systems Engineering Professional **Certification**



Chapters and Groups

- At the heart of INCOSE is the ability to connect people.
- Whether you are interested in increasing your circle of influence, or in working on an issue, INCOSE Chapters and Working Groups offer unparalleled points of connection.



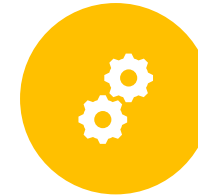
Membership Benefits



A global network of colleagues who understand systems engineering



Certification opportunities



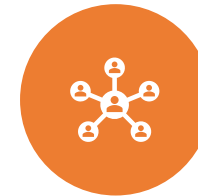
Access to quarterly e-Publications, *INSIGHT* and *Journal of Systems Engineering*



Electronic version of the Systems Engineering Handbook



Collaborate with experts and practitioners **worldwide**



Exclusive access to INCOSE Connect, the collaborative space for **INCOSE** Members Only

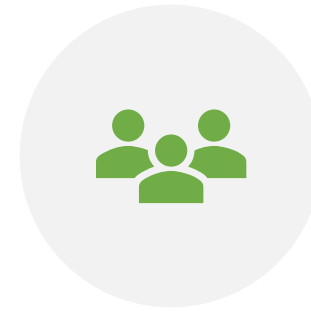


Member discounted registration to the International Workshop and International Symposium.

Working Groups



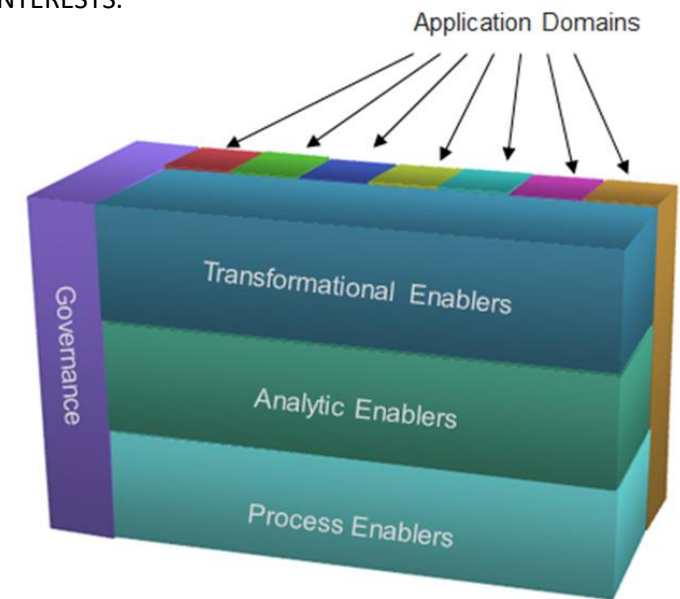
WORKING GROUPS (WGS) ARE THE RESOURCE PRACTITIONERS NEED.



DISCUSS, COLLABORATE, SHARE IN PERSON, AND ONLINE ACROSS MORE THAN 60 WGS IN INCOSE WITH A WIDE DIVERSITY OF INTERESTS.



INCOSE WGS CREATE PRODUCTS, PRESENT PANELS, DEVELOP AND REVIEW STANDARDS.

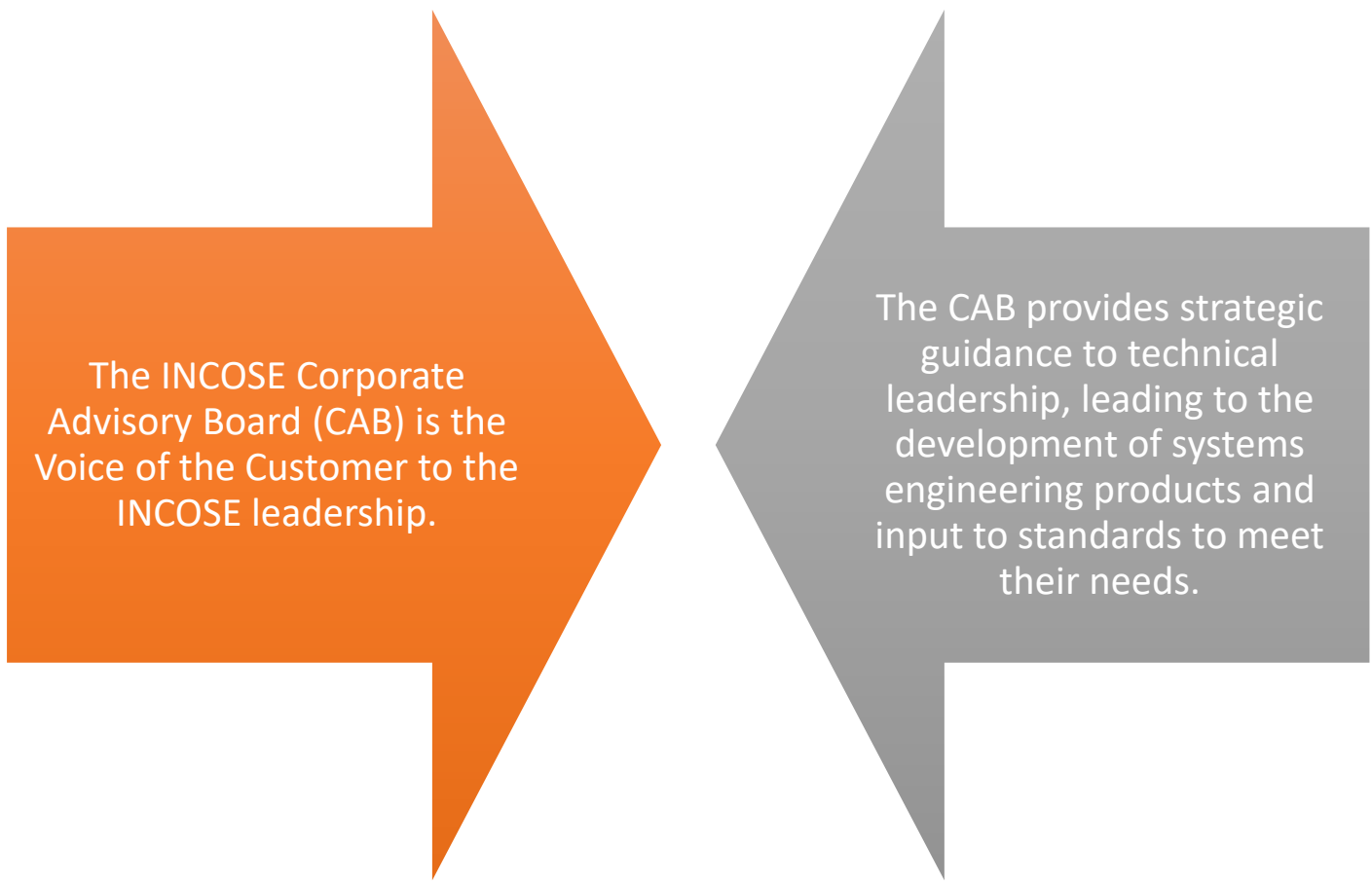


Working Group Members

- Bring value to other INCOSE stakeholders in your interest area
- Build expertise and contacts
- Help develop and review international standards
- Share information across Working Groups
- Create products to advance the state, art and practice of Systems Engineering.



Corporate Advisory Board



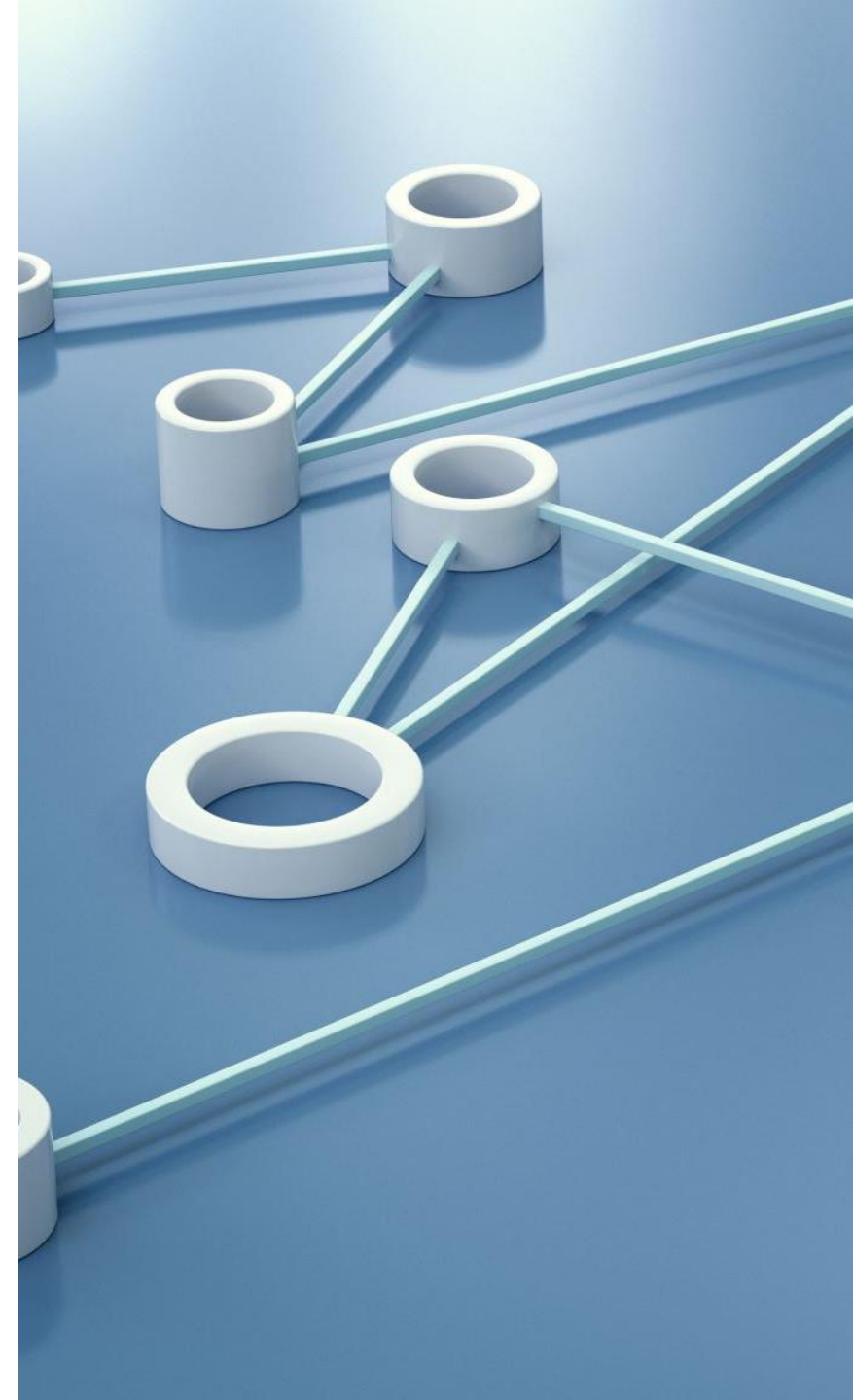
The INCOSE Corporate Advisory Board (CAB) is the Voice of the Customer to the INCOSE leadership.

The diagram consists of two large, stylized arrows pointing towards each other. The left arrow is orange and contains text about the CAB's role as the 'Voice of the Customer'. The right arrow is grey and contains text about the CAB providing 'strategic guidance to technical leadership'. The arrows are positioned on a white background, with a dark blue vertical bar on the far left containing the title 'Corporate Advisory Board'.

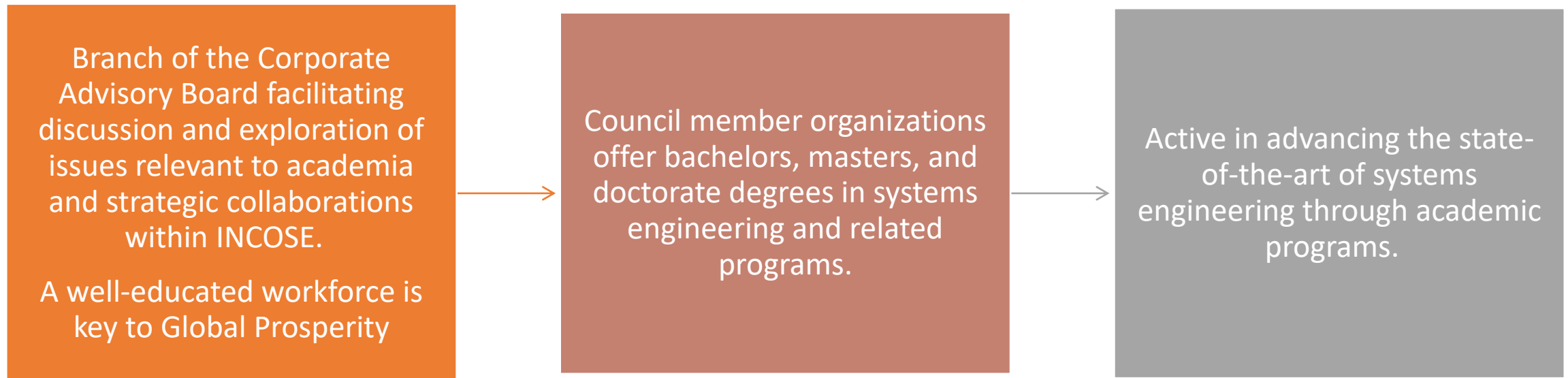
The CAB provides strategic guidance to technical leadership, leading to the development of systems engineering products and input to standards to meet their needs.

WHY JOIN THE INCOSE CORPORATE ADVISORY BOARD?

- Corporate Advisory Board membership allows your organization to guide the direction of the discipline.
- Employees can gain access to the state-of-the-art products.
- Align with peers and fellow industry leaders, grow your global footprint, and learn about how other industry leaders are applying systems engineering to solve business problems.
- Gain better access to talent – find and hire competent, certified Systems Engineers through your INCOSE connection



Academic Council



INCOSE Student Divisions

Undergraduate and/or graduate students who wish to become actively involved in INCOSE while enrolled in an accredited course of study at a college or university

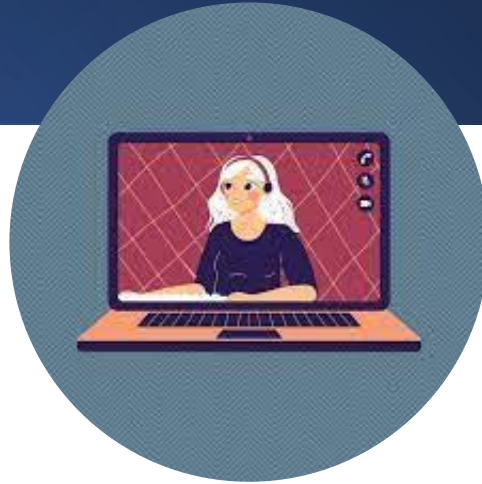
Student Divisions are operated as a component of a nearby chartered INCOSE chapter, and require:

- 1) a student body interested in becoming involved with INCOSE,
- 2) a faculty member who is a member of INCOSE and willing to act as the Division mentor and liaison between INCOSE and the university, and
- 3) active sponsorship and participation by a chartered INCOSE chapter.

Certification

		
Associate Systems Engineering Professional	Certified Systems Engineering Professional	Expert Systems Engineering Professional
College students and those new to systems engineering may be qualified as Associate Systems Engineering Professionals (ASEP).	Working engineers who can perform independently in a variety of systems engineering functions can be recognized as Certified Systems Engineering Professionals (CSEP).	Individuals who solve the most challenging, technical problems and are seen as leaders in their community can become Expert Systems Engineering Professionals (ESEP).
LEARN MORE	LEARN MORE	LEARN MORE

Conferences and Connections



- <https://www.incose.org/events-and-news>

Why Attend INCOSE IS2022?





key event Figures



Average of
900
participants



- The INCOSE International Symposium has been taking place uninterrupted since 1991.
- It is the largest annual gathering of people who do systems engineering.
- The event includes presentations, case studies, workshops, tutorials and panel discussions.
- The program attracts an international mix of professionals at all levels, and includes practitioners in government and industry, as well as educators and researchers.

About the International Symposium (IS)



Why Should You Attend IS 2022

- Share ideas, network, build competency, pursue certification.
- Contribute to the advancement of the profession through collaboration on tools, processes and methodologies.
- Learn about new offerings in training and education, and forge new partnerships.
- Tickets from \$500.
- Listen to talks from global leaders such as:



Dr. Christopher J. Scolese
Director, NRO



Laura Doughty
Director, Peakfield Consultancy Ltd & Head of
Culture and Engagement, Project Delivery
Directorate, Sellafield Ltd



Carla Bailo
Center for Automotive Research (CAR)

Book your place at www.incose.org/symp2022



Sponsoring IS2022

- Sponsoring IS2022 offers a wealth of opportunities to interact with systems engineering communities
- There are a range of exhibiting packages available starting from \$1,250

1

VISIBILITY

Unique brand of recognition and visibility for your organization

2

PRACTICE

Access to the latest thinking relevant to the practice of Systems Engineering

3

SPOTLIGHT

Put a spotlight on your organization's competency in Systems Engineering

4

ASSOCIATION

Be associated with the highest culture of professionalism and innovation

5

SUPPORT

Demonstrate organizational support to INCOSE's mission

6

CONNECTIONS

Develop sustainable business connections





www.incose.org/symp2022/sponsors



International Symposium 2022 (IS2022)

- IS2022 will take place from June 25 to June 30, 2022.
- It will take place as a hybrid event with the physical event taking place at Huntington Place, Detroit, USA.
- This year's theme is 'The Power of Connection'.

The program by numbers

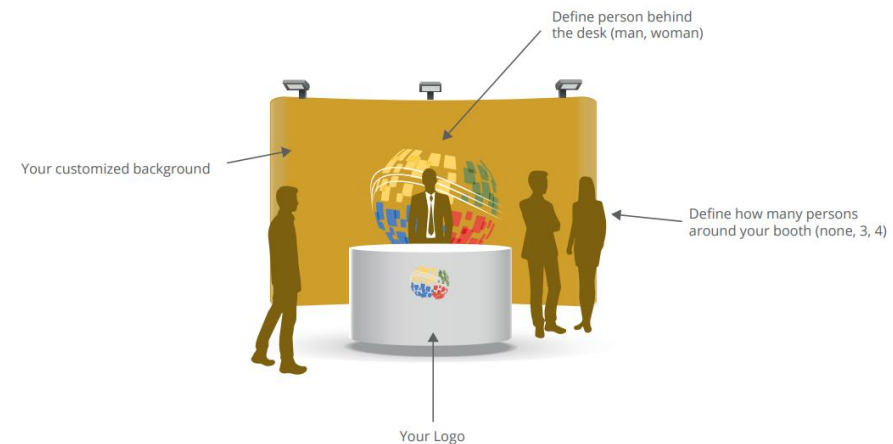
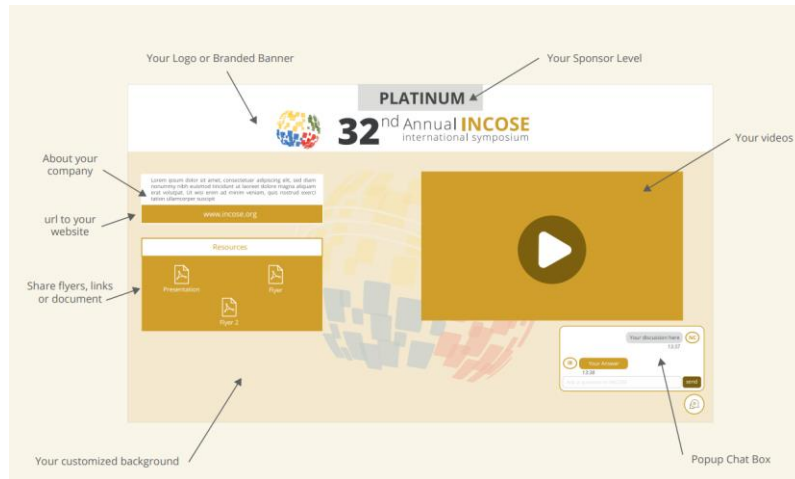
	15 Tutorials		4 Keynote speakers
	10 Panels		Over 130 Presentations



Exhibiting at IS2022

- Interact with event participants face to face
- Connect to all participants through a private chat available on the IDLS2022 App and dedicated virtual platform
- Booth Packages available from \$1,600

Virtual Sponsor Showcase



www.incose.org/symp2022/sponsors



Dear Christopher Hoffman,

The technical program is on-line. Start exploring the program and build your own agenda.

Technical Program



Saturday, June 25 - Sunday, June 26
12 Tutorials



Monday, June 27 - Thursday, June 30
130+ Papers and Presentations on Systems Engineering
5 tracks
7 panels



4 Inspiring Keynote Speakers

Monday, June 27 : Dr. Christopher Scolese (NRO)
Tuesday, June 28 : Carla Bailo (Center for Automotive Research)
Wednesday, June 29 : Laura Doughty (Peakfield Consultancy Ltd & Sellafield Ltd)

Systems, Industry 4.0 & Society 5.0,
Biomed/Healthcare/Social Services,
Infrastructure, Oil and Gas

Modeling/Simulation/Analysis, Processes,
Systems of Systems, Resilience, Decision
Analysis and/or Decision Management,
Complexity, Product Line Engineering,
Project Planning, Project Assessment,
Project Control, Technical Leadership,
Verification/Validation, System Security,
Measurement and Metrics, Artificial
Intelligence, Machine Learning

Germany, Hungary, India, Israel,
Italy, Japan, Lebanon, Lithuania,
Malaysia, Netherlands, Norway,
Saudi Arabia, Singapore, South
Africa, Spain, Sweden, Switzerland,
Thailand, United Kingdom, United
States

BROWSE THE PROGRAM

Certification

IS2022 is just one of many of events eligible for PDUs. You can claim 1 PDU towards your INCOSE Systems Engineering Professional (SEP) certification per hour of participation.

Exhibit hall

Come and meet our exhibitors. More than 40 exhibitors will showcase their products, services and/or training.

Registration

Register **before May 15th** to benefit from the discounted rate.

REGISTER

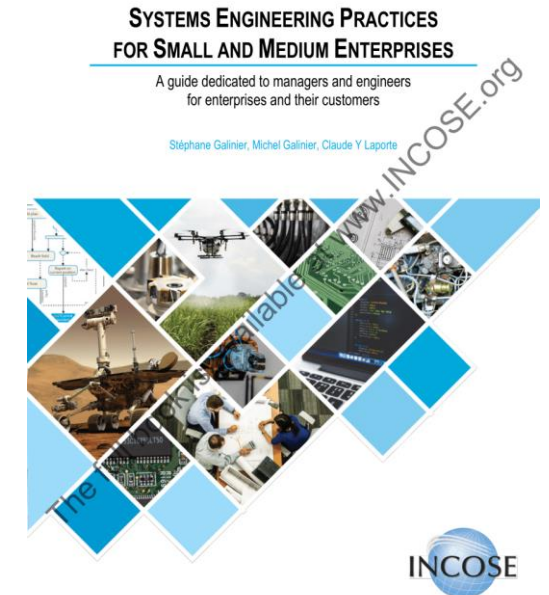
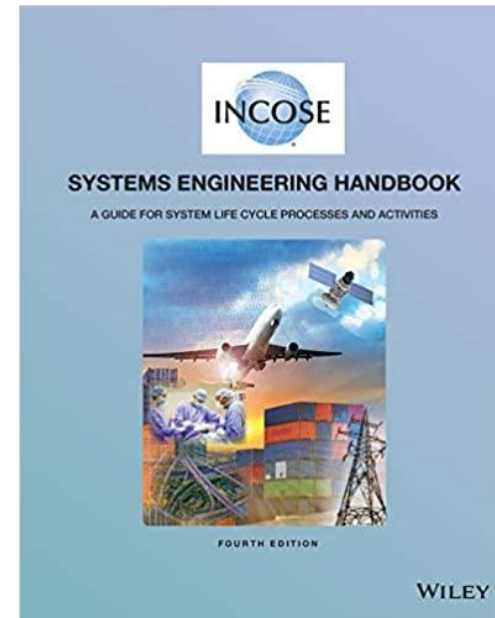
Hotel Reservation

A limited number of guestrooms are available for IS participants at the Detroit Marriott at the Renaissance Center.

Reservation deadline: May 31st

BOOK YOUR HOTEL

Publications



<https://www.incose.org/products-and-publications/se-handbook>

INCOSE Foundation

Committed to rewarding skills through scholarships for those engaged in finding solutions to complex technical challenges at all stages of their education or career.



Offers possibilities for people to pursue goals that anticipate the future – for them and for the world.



Scholarships Include:

ISEF, the International Science and Engineering Fair INCOSE Award to a pre-college student

The Chesapeake Chapter Award

The Stevens Doctoral Award for Promising Research in Systems Engineering to a PhD Candidate

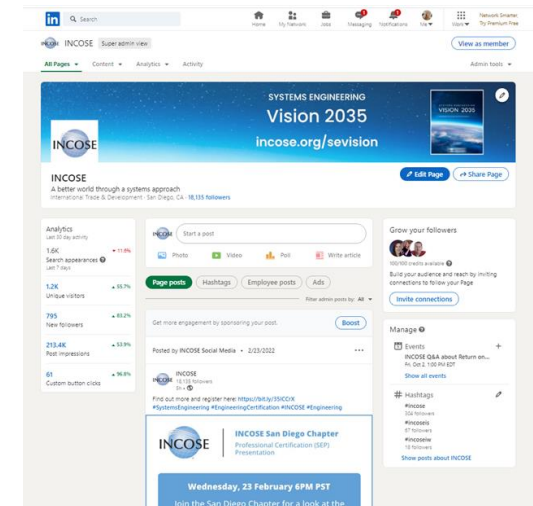
The James E. Long Award for Post Doctoral work

Engage with INCOSE Follow us on social media

Follow, like, comment, and share on all INCOSE social media platforms.



- LinkedIn:
<https://www.linkedin.com/company/44559/>
- LinkedIn Group:
<https://www.linkedin.com/groups/7499834/>
- Facebook
- Twitter
- Instagram
- More to come



Questions?

INCOSE:

*The global professional association
for systems engineers*



International Council on Systems Engineering

A better world through a systems approach

For more information contact marcom@incose.net
www.incose.org