



28th Annual **INCOSYMP**
international symposium

Washington, DC, USA
July 7 - 12, 2018

Towards Solving MBSE Adoption Challenges

The D3 MBSE Adoption Toolbox



Motivation

- MBSE promise
- MBSE adoption relies on human, financial, organizational and technological factors
- Few reports talk about the problems and failure stories
- Discussion focuses on MBSE technical details (e.g., SysML language, modeling tool) rather than identifying and understanding other factors
- MBSE is a matter of necessity, rather than cost saving?

Jungle of Buzzwords



INCOSE definition is very vague “formal application of models...”

What is the difference between MBSE and MBD?

What is the difference between System Architecture and System Design?

INCOSE says “SysML is critical enabler for MBSE”

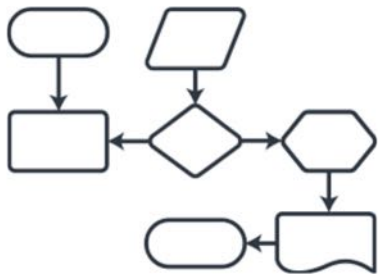




MBSE Adoption components



Personnel



Process



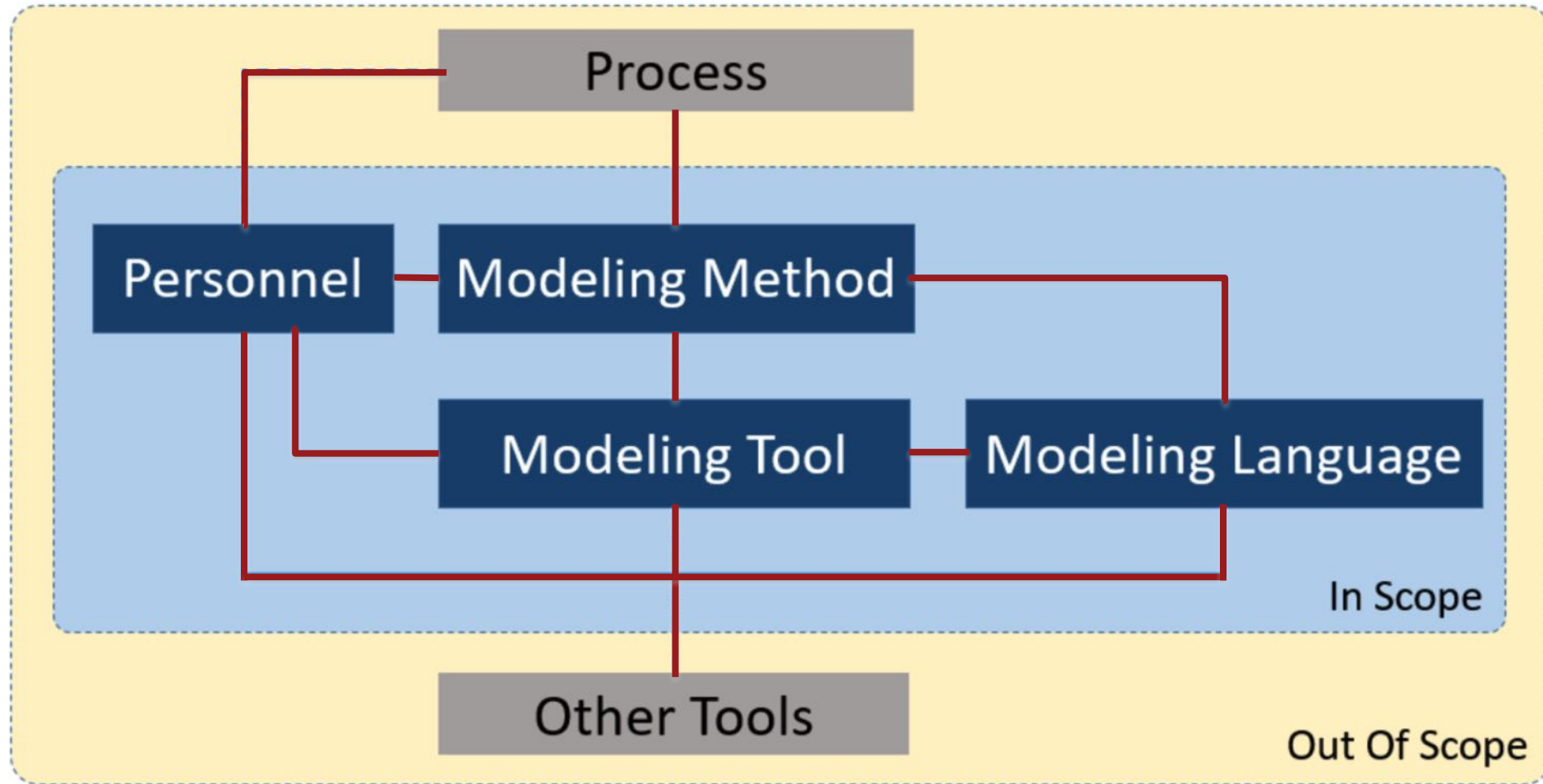
Modeling Language

Modeling Method

Modeling Tool



MBSE Adoption components





Executive Level Sponsorship

Adoption Strategy Collaboration

Awareness and Change Resistance

Upfront Investment

Complexity Management

Purpose and Scope

Method Definition and Extension

Tool Dependency and Integration

Modularity and Reusability



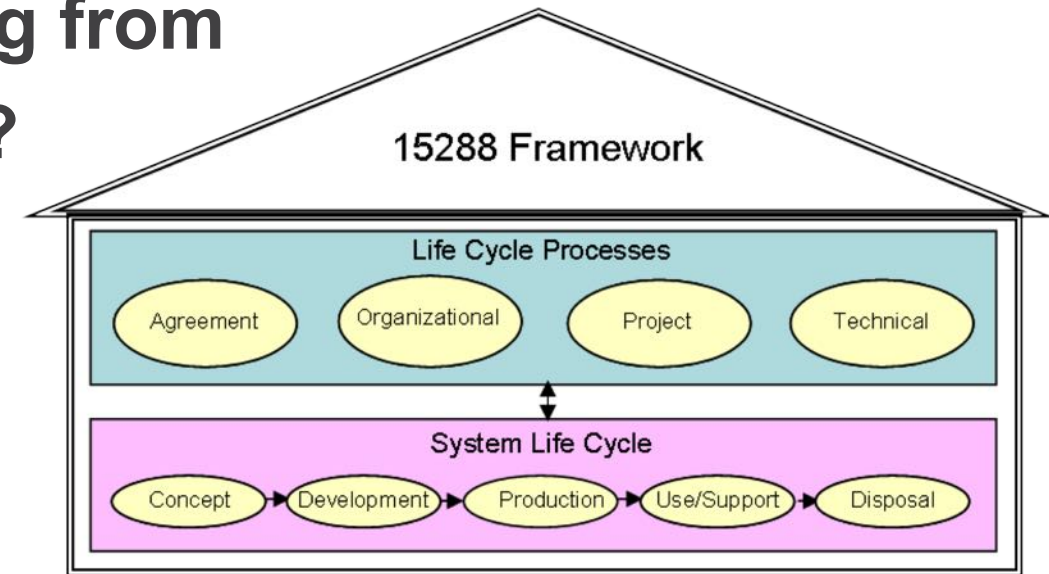
ISO 15288

Perfectly addresses the main processes of SE!

But

Does it fit for MBSE?

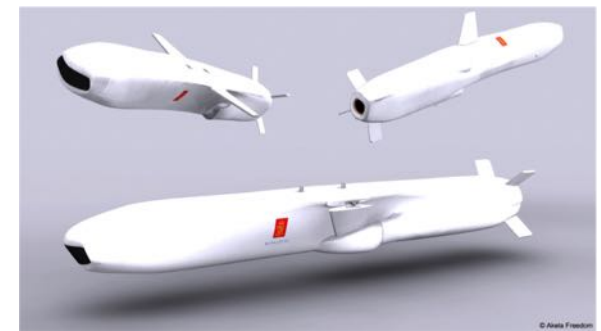
Where is the process of transitioning from document-based SE to MBSE?





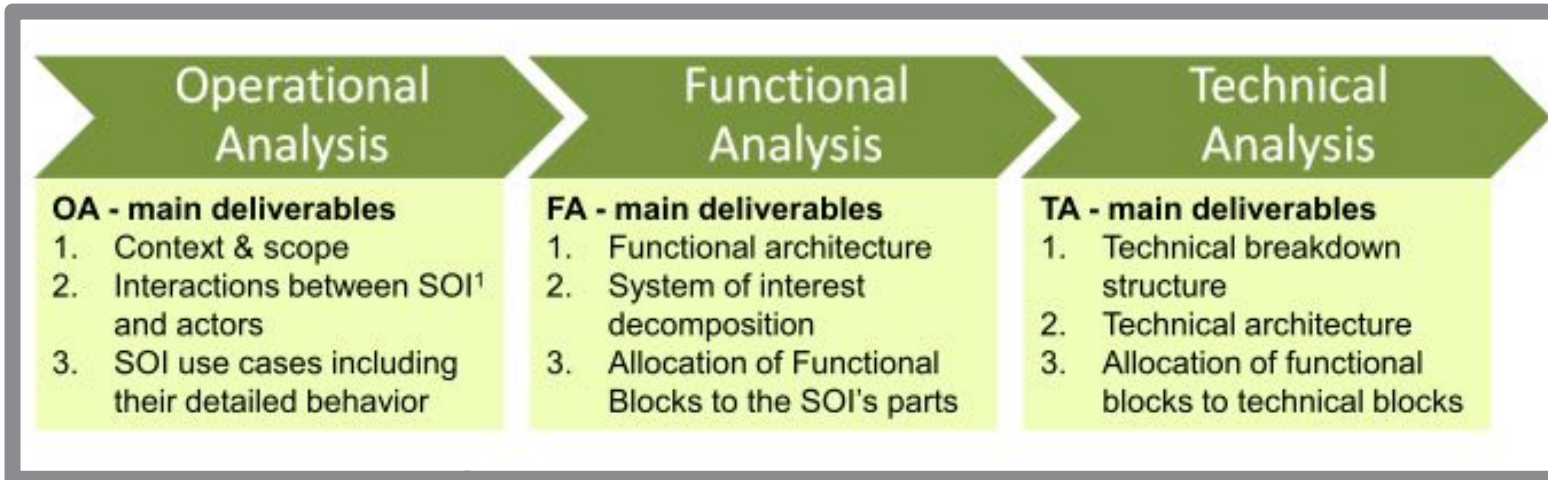
Kongsberg Defense and Airspace

- A number of different technologies to be integrated
- A lot of software (60% of the system requirements affects software)
- 30-years lifecycle
- A new methodology had to be developed and learned
- It took several years and 10 training sessions to mature AF
- The majority claim that SysML is too complex
- Clear terminology is essential in communicating the model
- it is a challenge to develop methodology and guidelines in parallel with product development
- The project is considered a success!
- There is commitment from management to move forward





Bombardier Transportation



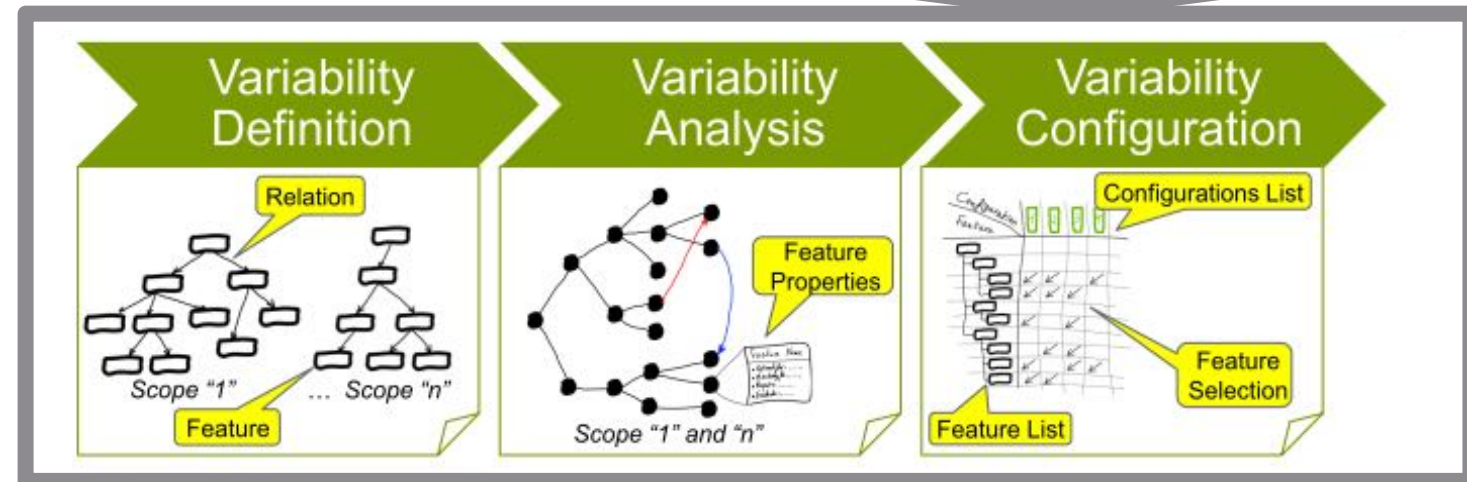
MBSE + Variability Management:

- Enable re-use
 - Modular development
 - Engage sales, management, and other non-SE stakeholders
 - Other...
- Being a frontrunner for other MBSE applications (e.g., MBPLE) is challenging

A need to customize a method for:

Optimized requirements traceability with system design and safety, automatic document generation for homologation, and other...

- It takes time to make MBSE adoption beneficial

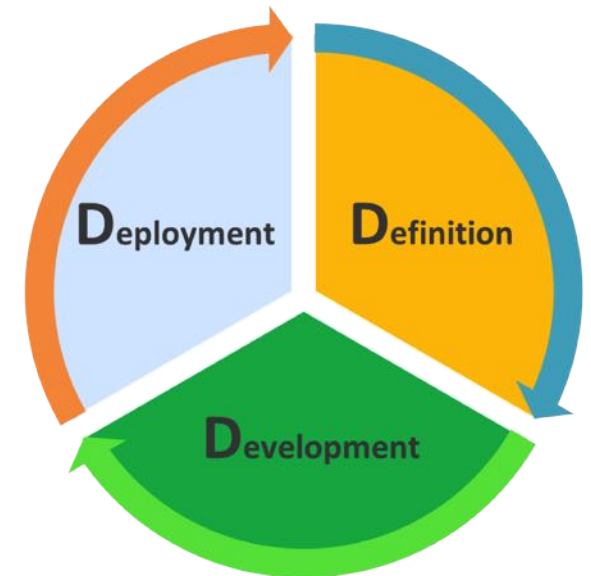




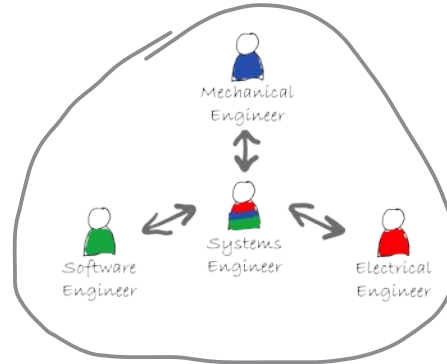
Influencers



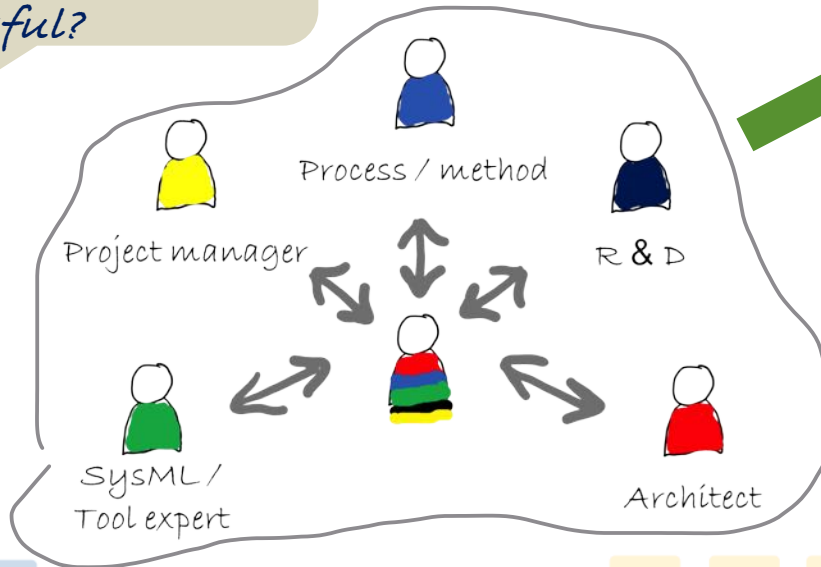
D3 MBSE Adoption Toolbox



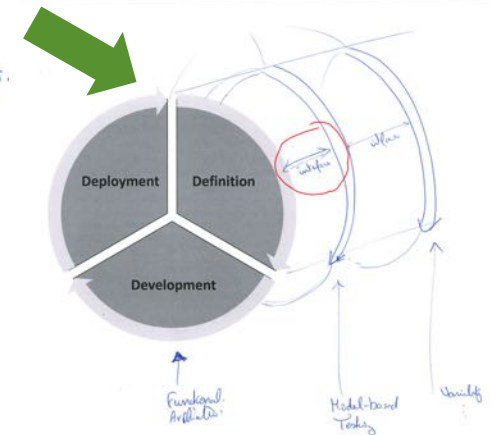
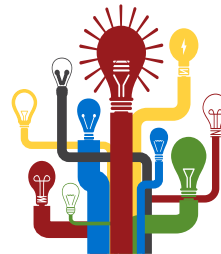
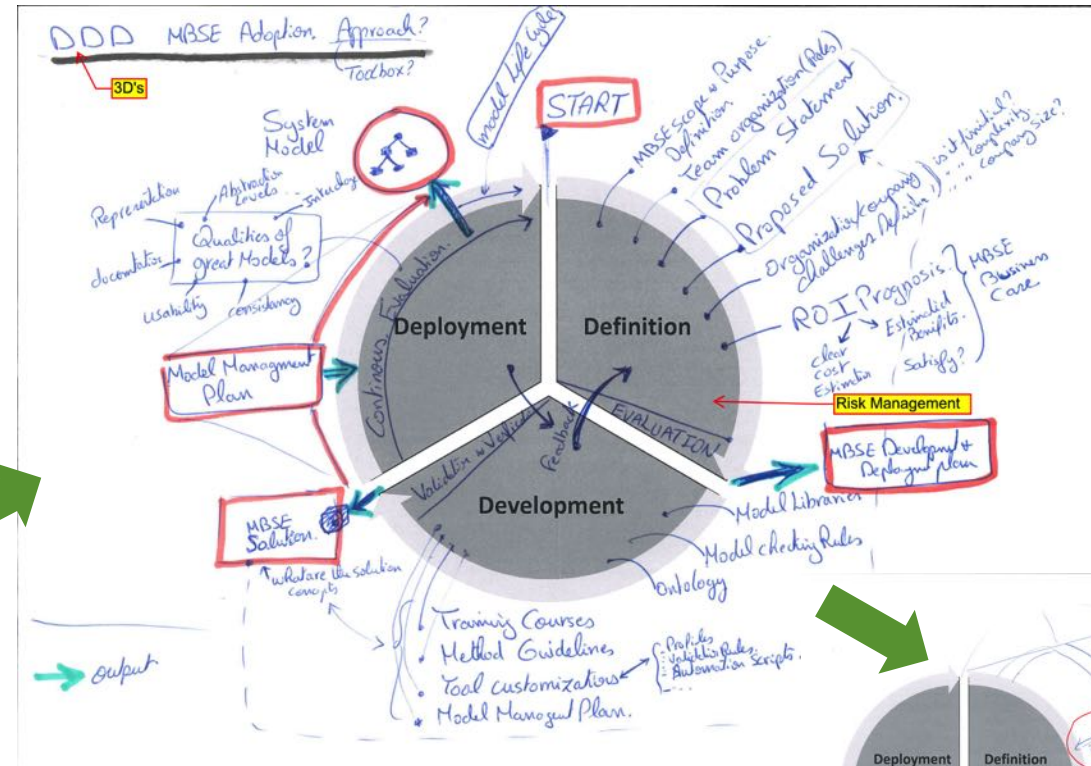
Why D3 and not DDD, 3D's or D³...?



Another level of abstraction

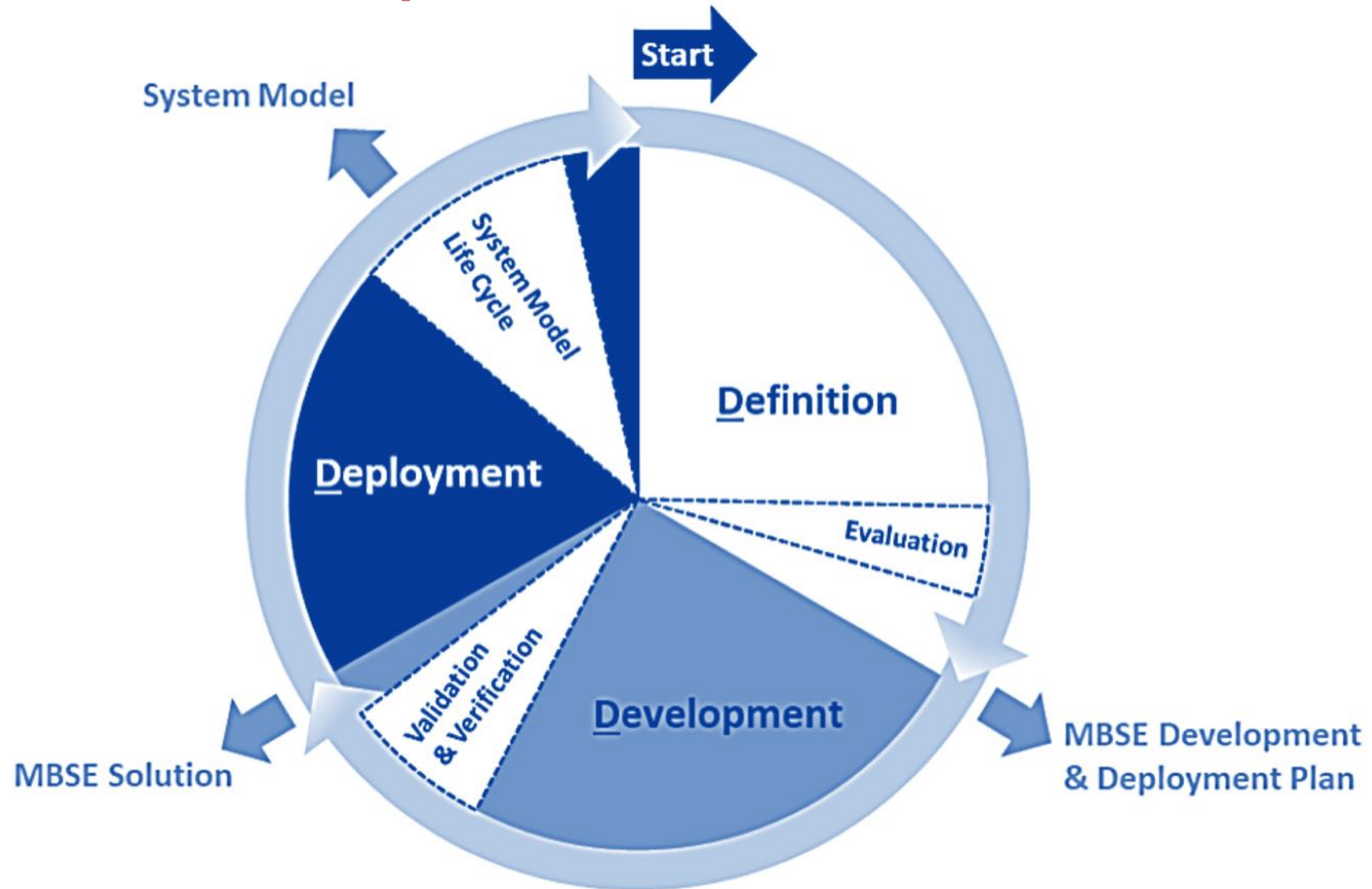


Who is responsible that MBSE adoption is successful?



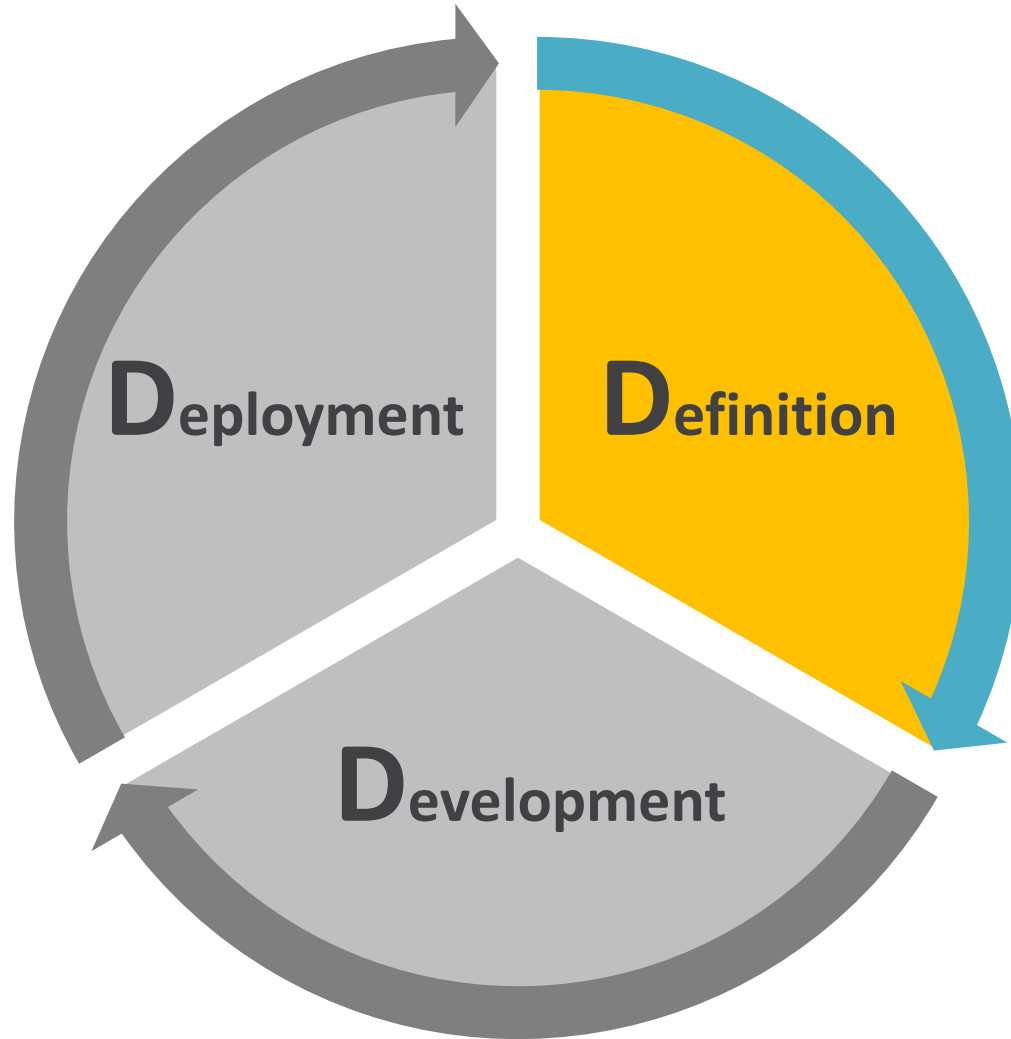


D3 MBSE Adoption Toolbox





D3 MBSE Adoption Toolbox



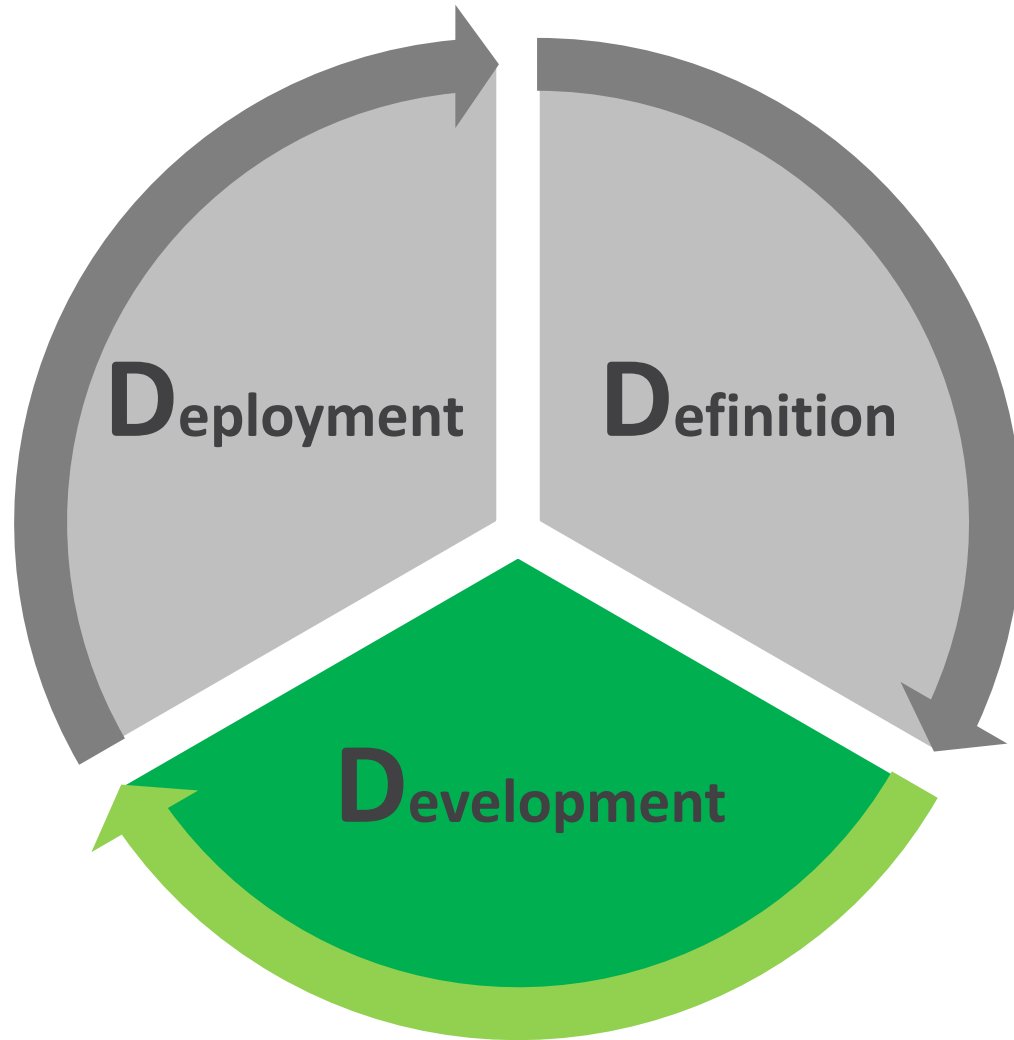
Definition Phase

- ☐ MBSE adoption **scope**
- ☐ MBSE adoption **purpose**
- ☐ **Team** establishment
- ☐ **Problem** statement
- ☐ **Awareness** courses
- ☐ **ROI** prognoses
- ☐ **Quality** assurance
- ☐ **Risk** management

➤ **Delivery of Development & Deployment plan**



D3 MBSE Adoption Toolbox



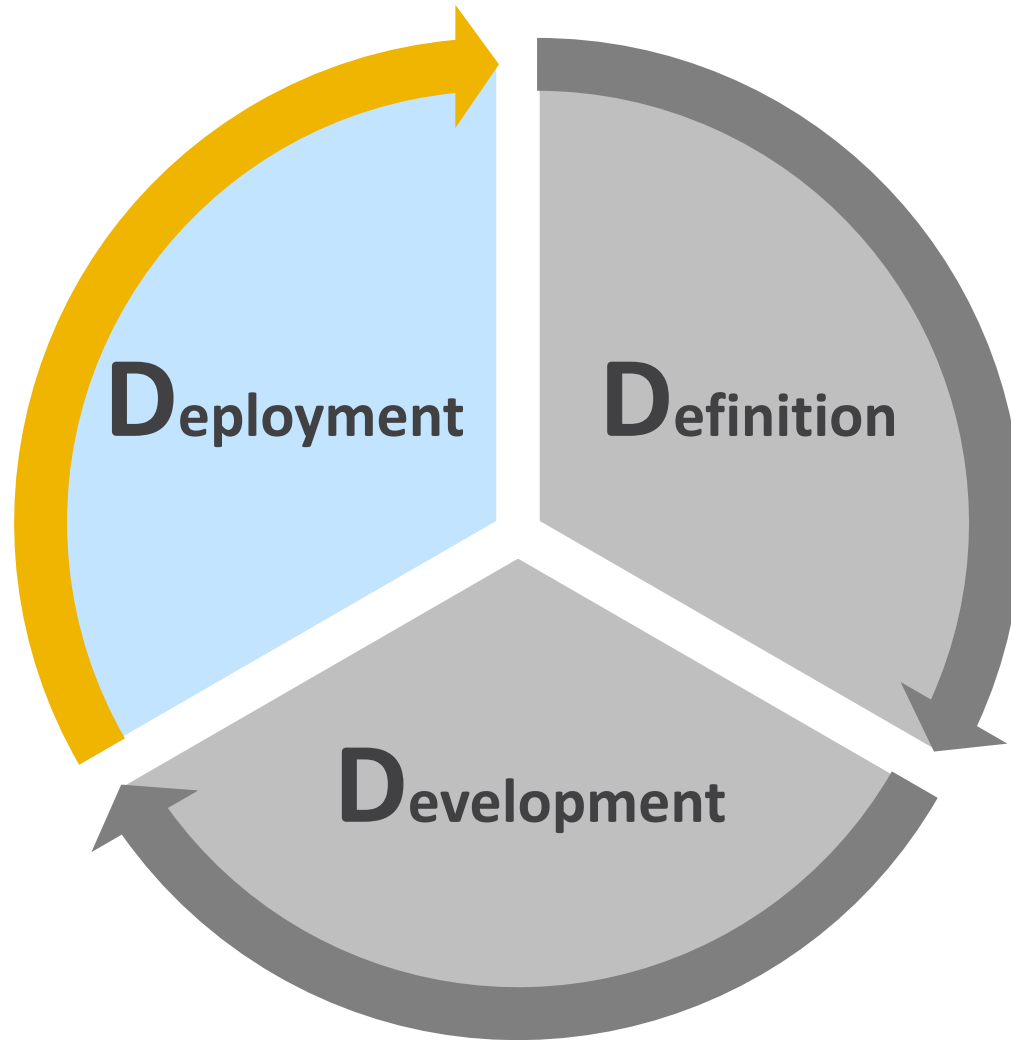
Development Phase

- ☐ Model **libraries**
- ☐ **Ontology** and glossary
- ☐ **Domain** models
- ☐ **Guidelines**
- ☐ Customized **training** courses
- ☐ Model **checking** rules
- ☐ Tool **customizations**

➤ **MBSE solution delivery**



D3 MBSE Adoption Toolbox



Deployment Phase

- ☐ Modeling **governance**
- ☐ Monitoring, coaching & Reporting
- ☐ Model **integration**
- ☐ Model **execution**
- ☐ Model **verification** and **validation**
- ☐ Quality of **valuable models**
- ☐ Systems model life cycle management

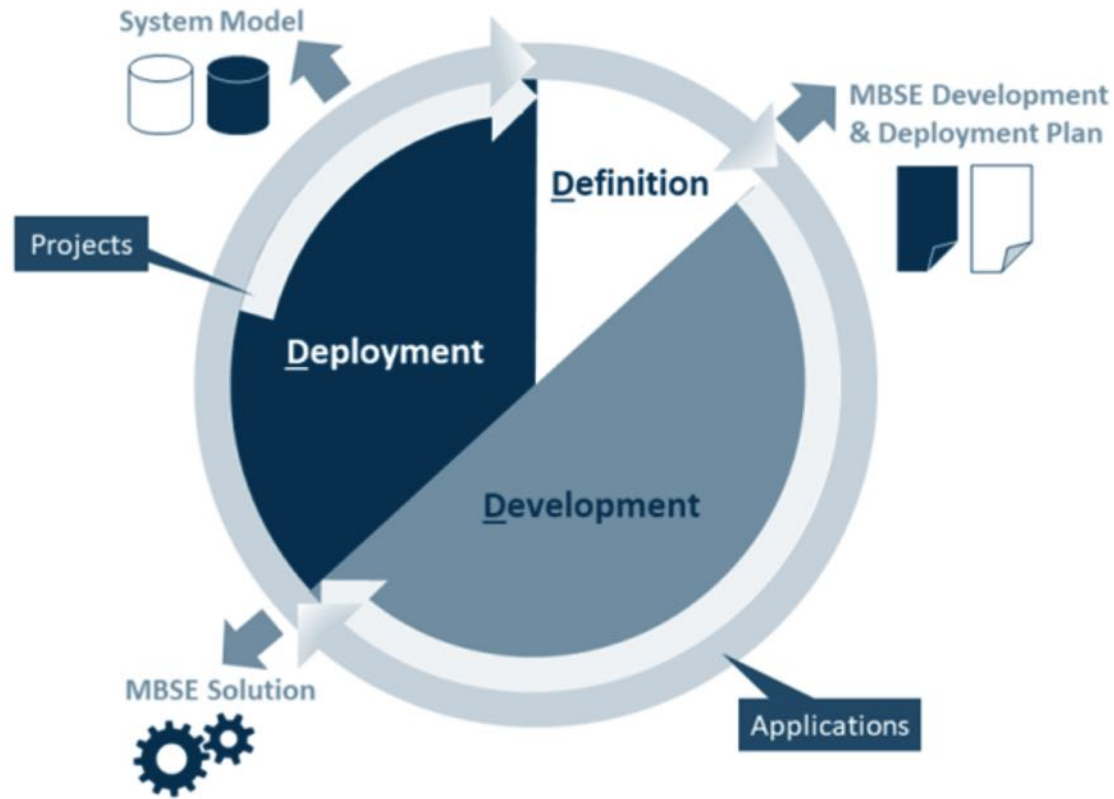
➤ **System model delivery**



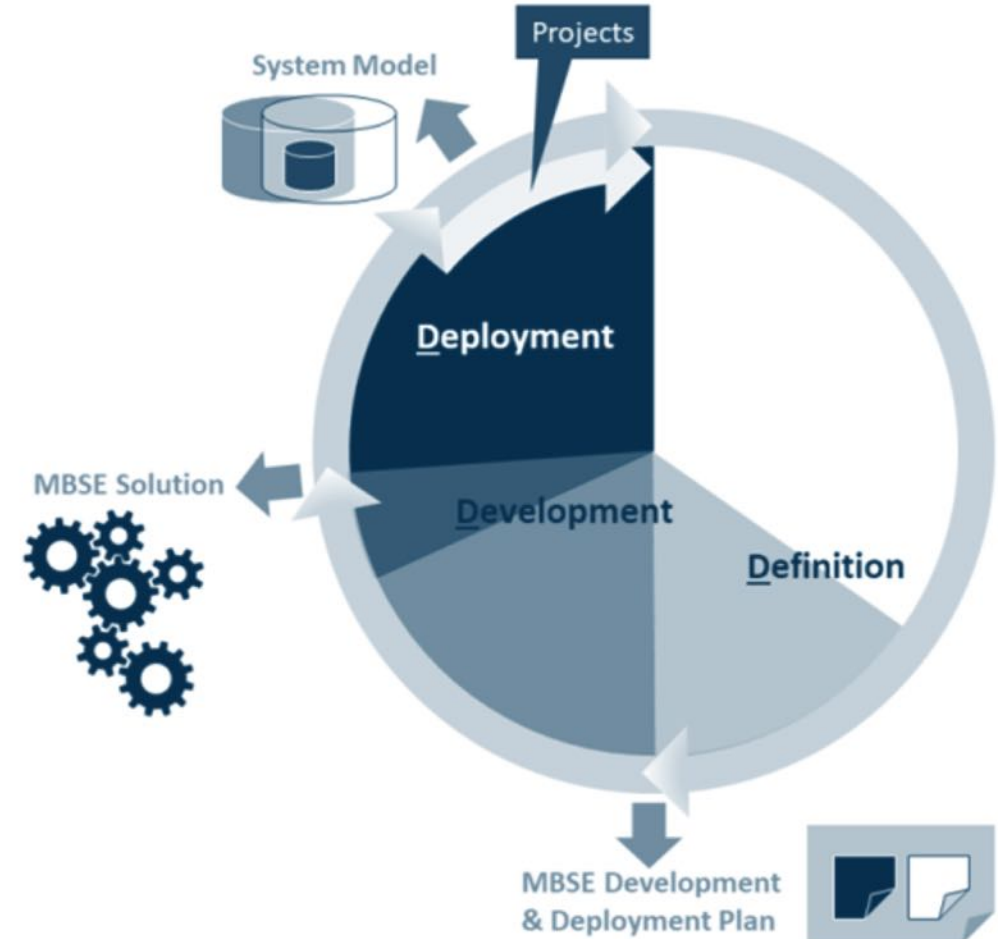
D3 MBSE Adoption Toolbox

Two Application Cases

Application Case 1



Application Case 2





Looking Forward

- Focus also on non-technical factors
- Enhance and work further on the draft version of the D3 MBSE Adoption Toolbox
 - Do it with you and not alone



28th Annual **INCOSE**
international symposium

Washington, DC, USA
July 7 - 12, 2018

www.incose.org/symp2018