



**28<sup>th</sup>** Annual **INCOSE**  
international symposium

Washington, DC, USA  
July 7 - 12, 2018

[www.incose.org/symp2018](http://www.incose.org/symp2018)



2014

December  
2015

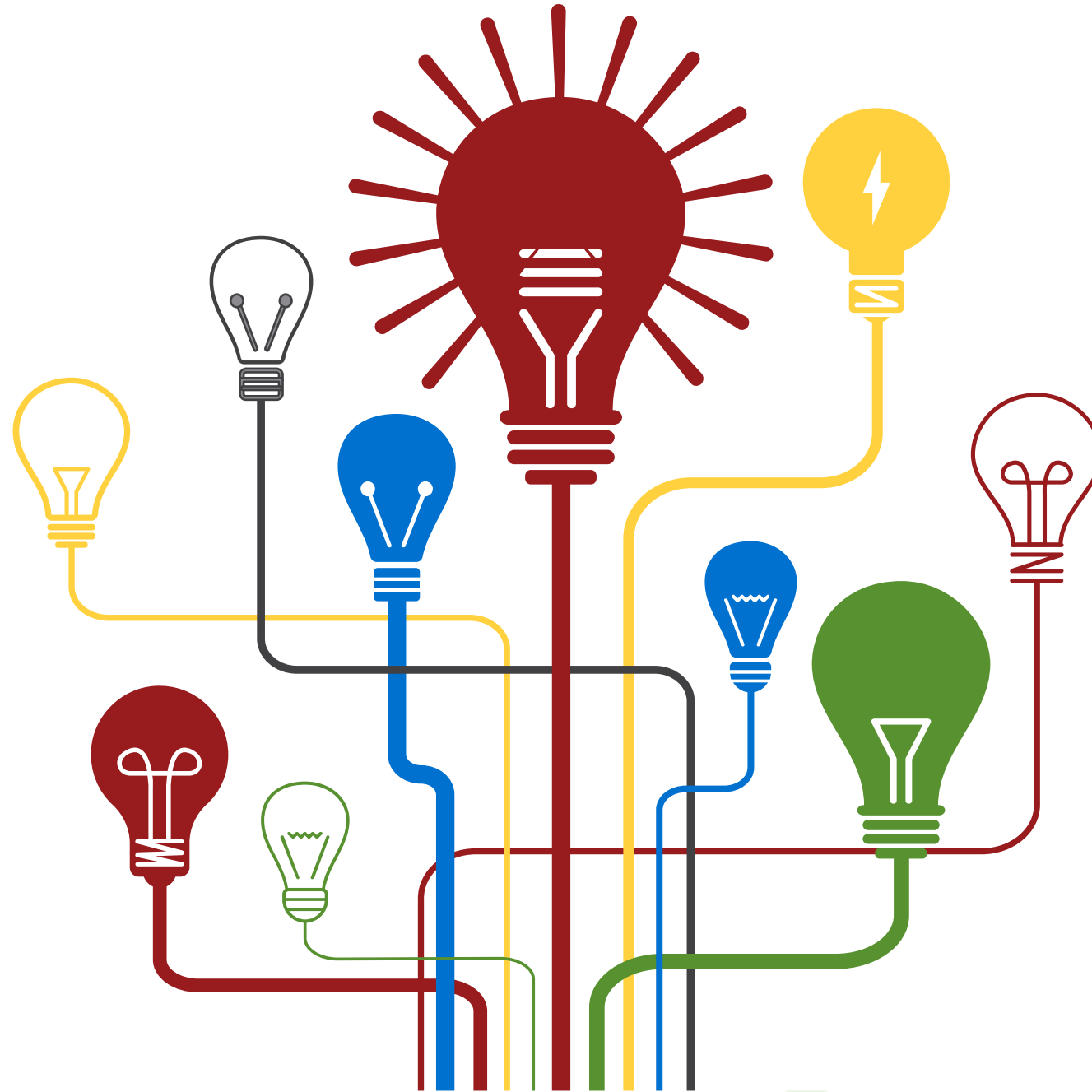
2016





*1. What are the causes of delays in the test phase?*

*2. What methods do the literature suggest to solve these issues?*

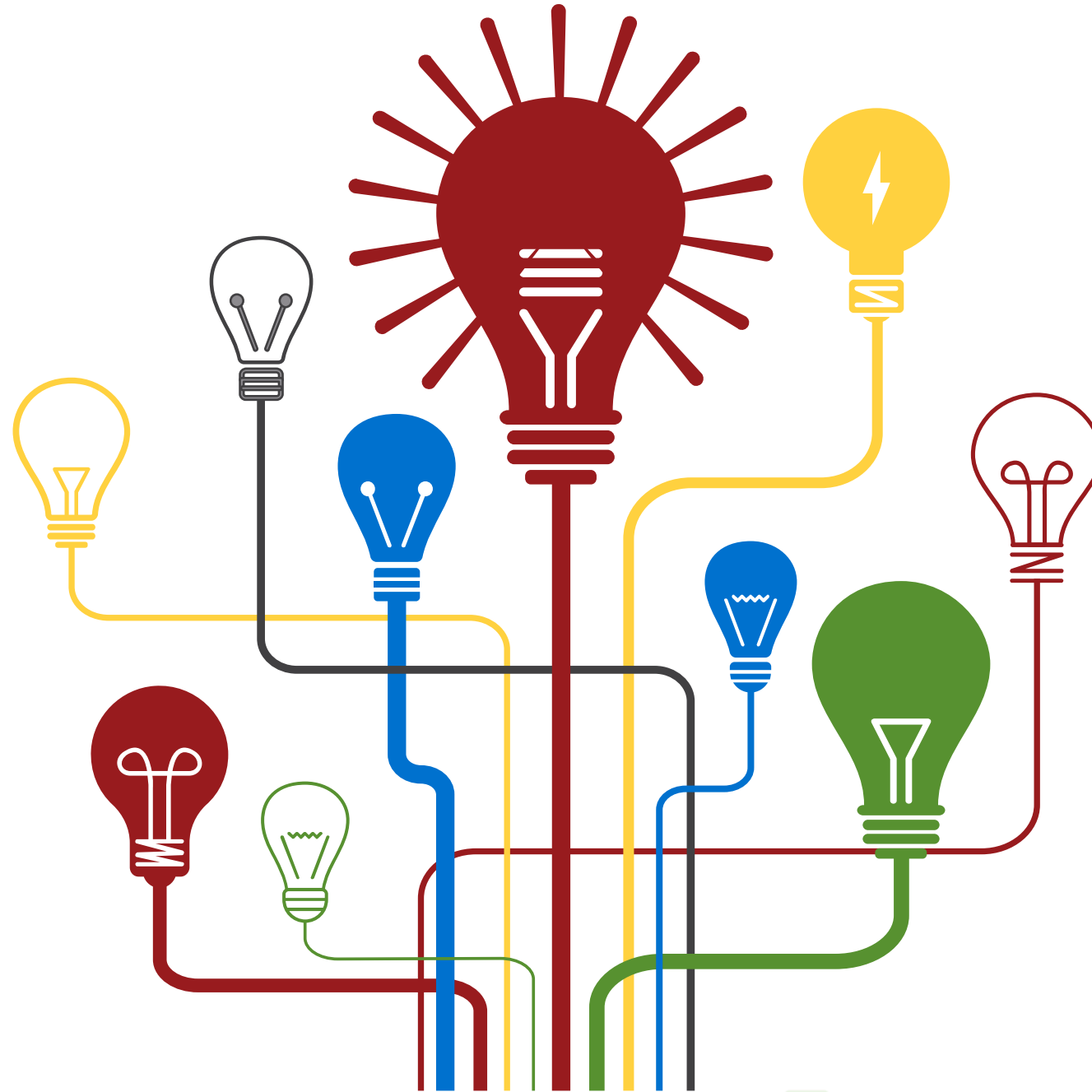




Fossil Fuel

Autonomous  
system

Electricity





**28<sup>th</sup>** Annual **INCOSE**  
international symposium

Washington, DC, USA  
July 7 - 12, 2018

What You Will

**The Importance of Project Management in the System Integration,  
Verification and Validation Process**

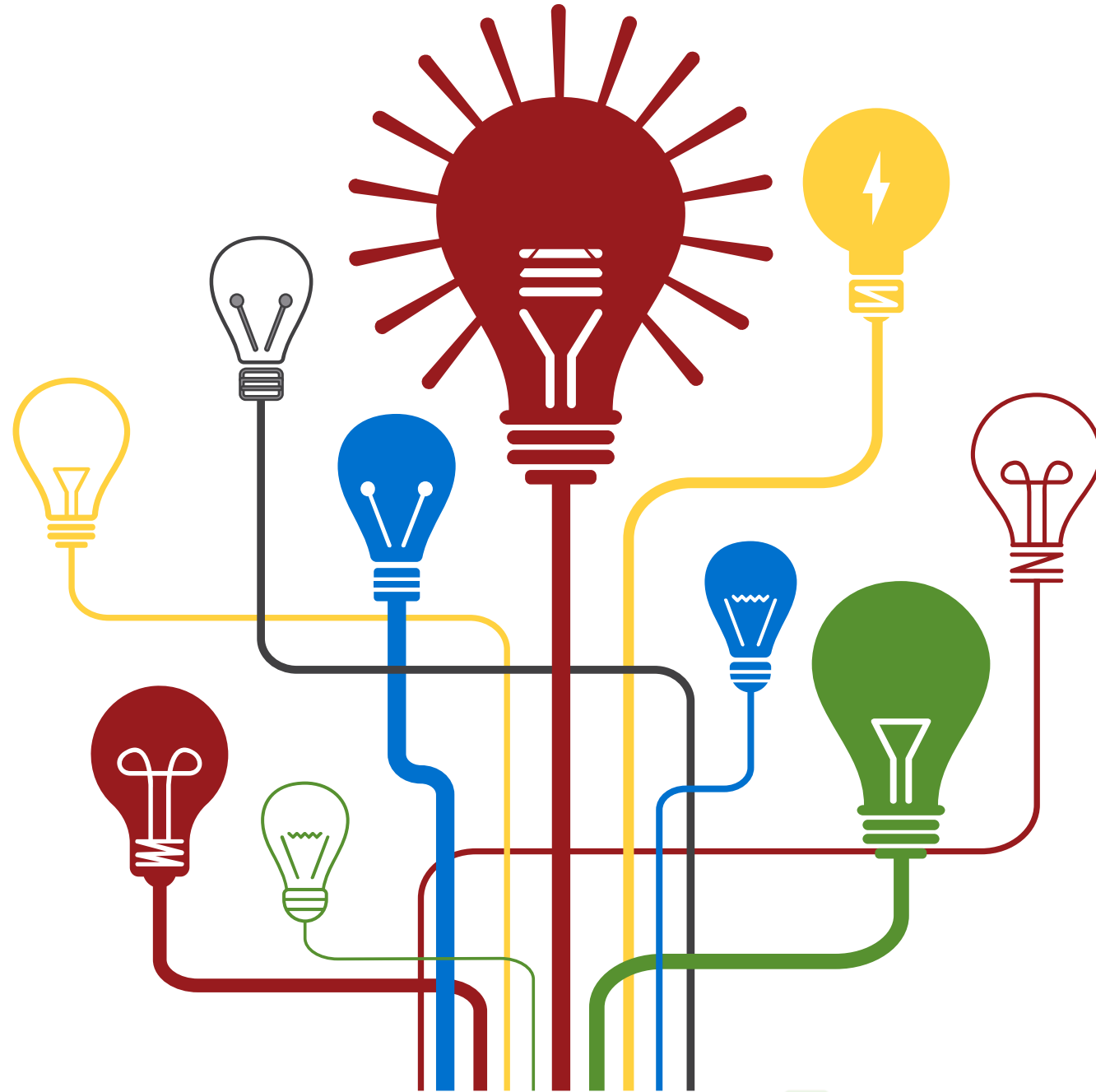
---

[www.incose.org/symp2018](http://www.incose.org/symp2018)



- Event chain methodology
- Last planner
- Complete kit concept
- Critical chain project management







# Thank you!

By Christoffer Jimmy Røsegg and Kristin Falk