



**33<sup>rd</sup>** Annual **INCOSE**  
international symposium

hybrid event

Honolulu, HI, USA  
July 15 - 20, 2023



Preventing MBSE Amnesia Through Role-Based Knowledge Management

# Shoring Up Atlantis

Sharon Fitzsimmons, MSE  
Sharon.Fitzsimmons@gmail.com

# MBSE: Why Your Company's Progress Is Slow

- Digital Engineering is a hot new trend.
- Companies are expanding its use.
- MBSE practitioners work in every field of engineering.

We don't yet know (as an industry) how to do it well.

We don't yet have enough people for the work.

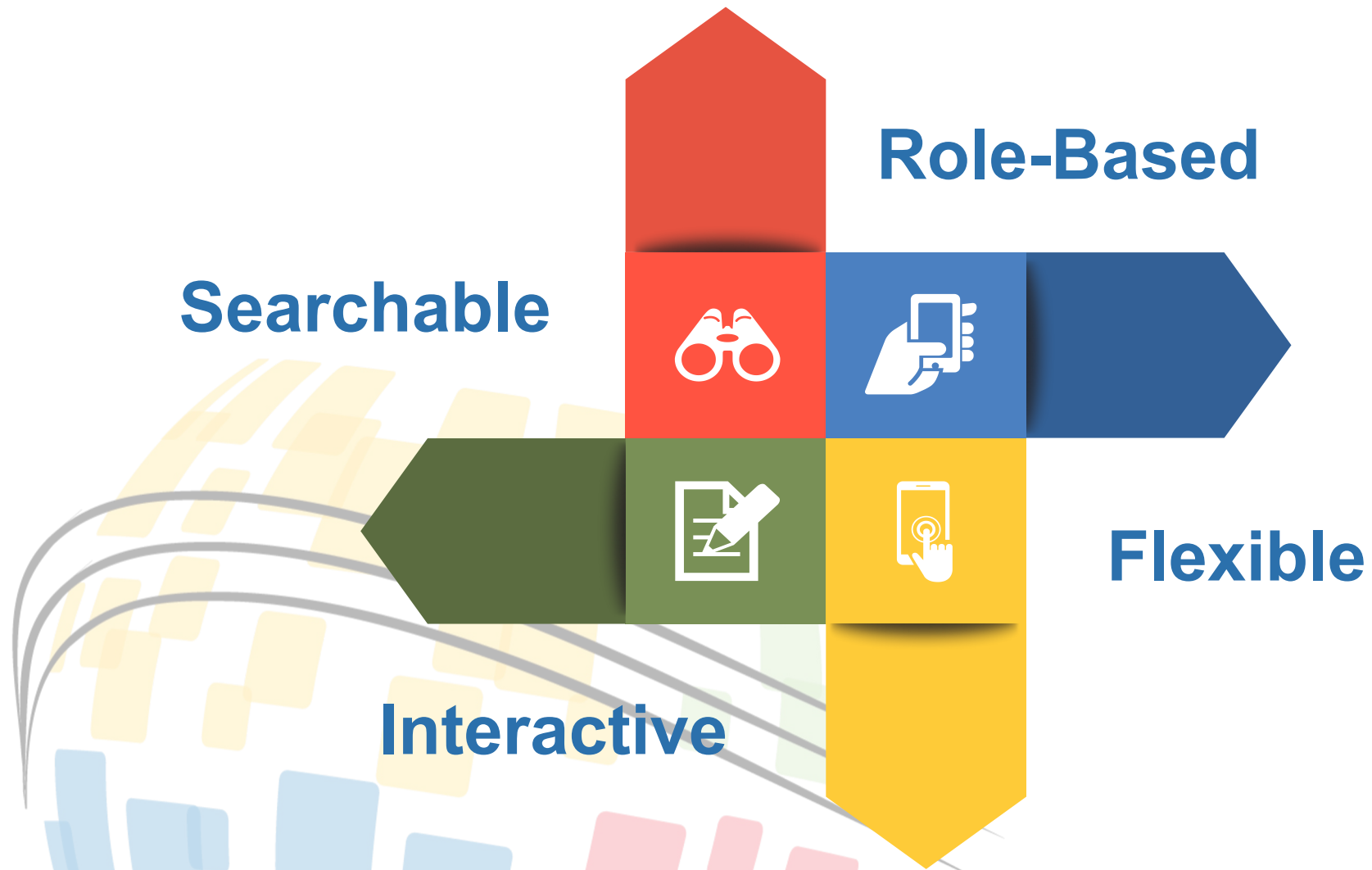
When people leave, their knowledge disappears

# Historically, This Isn't New

Innovation is most vulnerable:

- When “leavers” are proficient
- When employees leave early in project development
- When remaining employees are novices
- When firms are not able to hire comparable skill
- When “leavers” are part of a core task

# Where to Store Data



“Just put it on SharePoint” is equivalent to not capturing the data at all.

Choose an appropriate KM tool to avoid the SharePoint / Confluence “black hole.”

# Quantitative Literature Review Methodology



Read  
400  
Abstracts

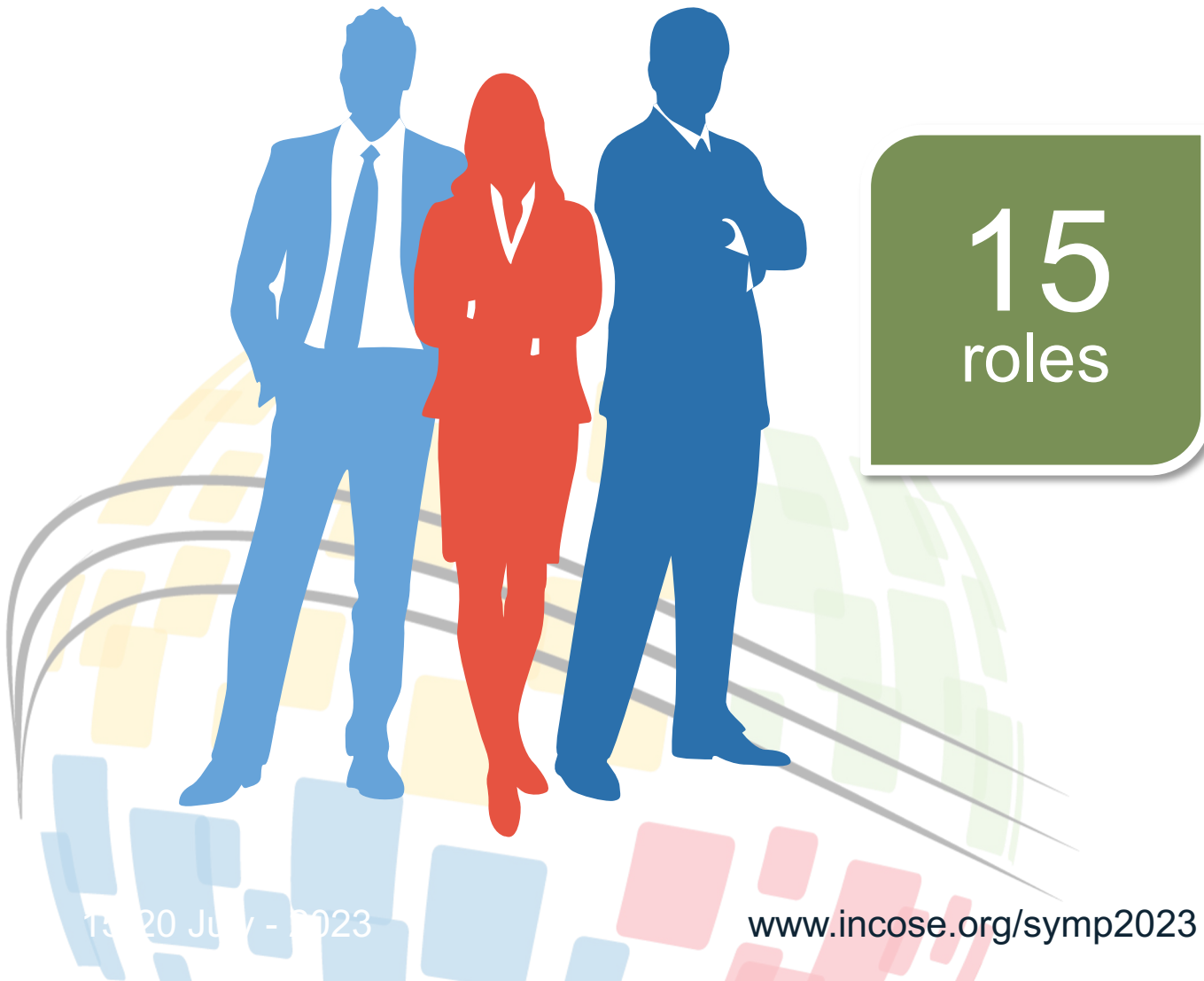
Keep  
relevant:  
312

Actors  
(Roles)

Actions  
(Tasks) and  
Purposes  
(Goals)

Analysis

# What are the Roles?



Cybersecurity Engineers

Data Engineers

Human Systems Engineers

Interface Engineers

Knowledge Management Professionals

Leadership (Managers / Executives)

Legal Teams

Marketing And Adoption

Network Engineers

Process Improvers

Safety Engineers

Software Engineers

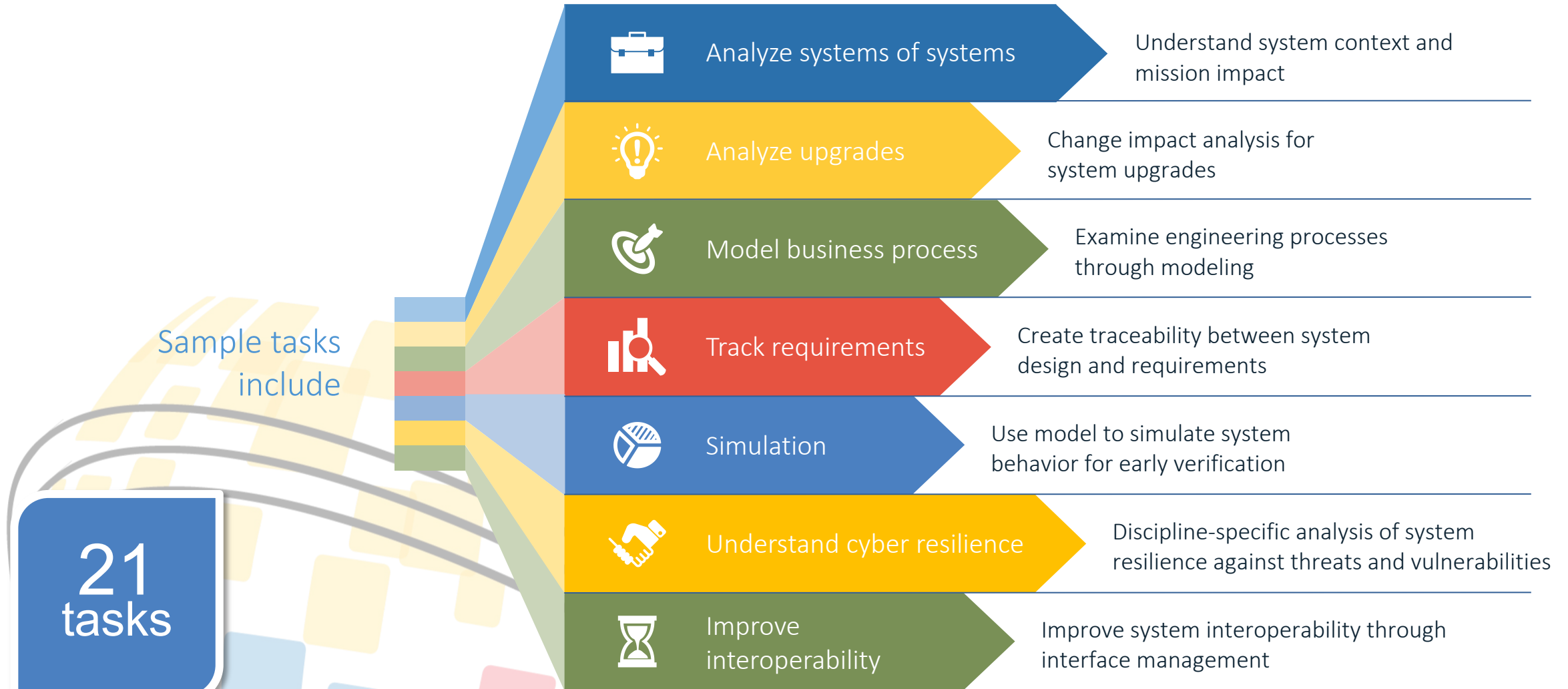
Sustainment Engineers

Systems Engineers

Test Engineers



# What are the Tasks?



# What are the Goals?

**Goals** describe what your Role-based users are trying to accomplish when they finish the **task**.

29 goals

Goals

Roles

Tasks

Effective knowledge management evaluates KM content against the user's goals.



# Role-Based Groups

## Leadership

How do I measure program success?



## Sustainment Engineers

How do I support entire system lifecycle?



## Test Engineers

How do I simulate system performance?



## Specialty Engineers

How do I answer my specific question?



## Big-Picture Engineers

How do I analyze systems of systems?



# Leadership

- Modeling engineering processes, and changes to previous engineering processes, from a decision-making perspective.
- Ways and timelines for developing modeling methods.
- Business process modeling.
- Using a model for decision making.
- Return on investment for implementing MBSE.



*Managers  
Executives*

**Cost Savings / Efficiency  
Decision Making**

# Specialty Engineers

- Methods for modeling each specialty engineering domain specifically.
- Methods for modeling requirements that need to be captured and met within that domain.
- Evaluation methods, particularly simulation tools, for determining that the system meets requirements.
- Risk assessment methods for specialty engineering.



*Cybersecurity*  
*Human Factors*  
*Safety*  
*Software*

**Increase / Improve Communication**  
**Map between tools or methods**

# Sustainment Engineers



*Sustainment*

- Modeling methods for sustainment engineering concerns, including supply chain / change impact.
- Modeling methods for variant management using a model.
- Lifecycle usage of the MBSE model for sustainment activities.

**Higher Quality Design  
Change Impact Analysis**

# Big-Picture Engineers

- Modeling and analysis methods for understanding systems of systems
- Methods for understanding mission impact
- Methods of modeling interfaces



*Cybersecurity  
Interface Engineers  
Systems Engineers  
Network Engineers  
Leadership*

**Interoperability / Systems of Systems Analysis  
Trade Studies**

# Test Engineers

- Using a MBSE model for simulation and test.
- Efficiency gains of using the model in lieu of testing.



*Cybersecurity Test  
Interface Test  
Mission Test*

**Evaluate System Capabilities  
Reusability of Model Data**



# Conclusion

- Keep your MBSE people happy – but also “shore up Atlantis” by:
- Choosing an appropriate tool for KM.
- Create roles appropriate to your organization (or use these).
- Determine the primary goals of those in the roles.
- Tailor role-based knowledge management to tasks and goals.



**33<sup>rd</sup>** Annual **INCOSE**  
international symposium

hybrid event

Honolulu, HI, USA  
July 15 - 20, 2023

[www.incose.org/symp2023](http://www.incose.org/symp2023)  
**#INCOSEIS**